

| | | |
|--|------------------------|---|
| WAAS CH 69409 W16A | APP CRS 162° | Rwy Idg 3248 TDZE 17 Apt Elev 17 |
|--|------------------------|---|

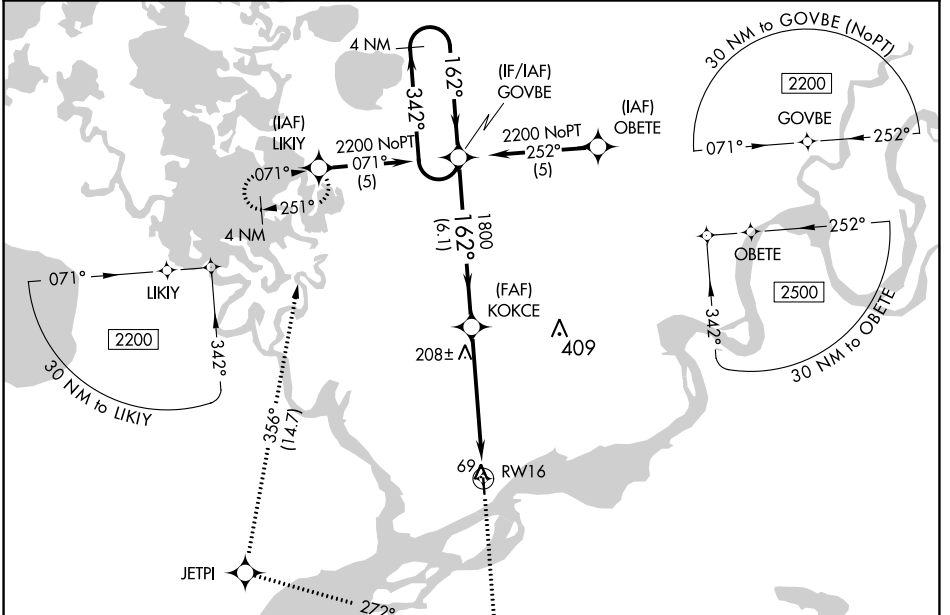
RNAV (GPS) RWY 16

NAPAKIAK (WNA) (PANA)

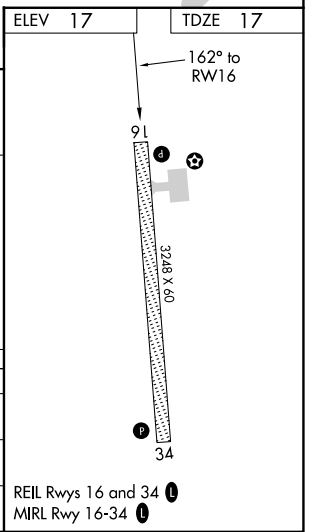
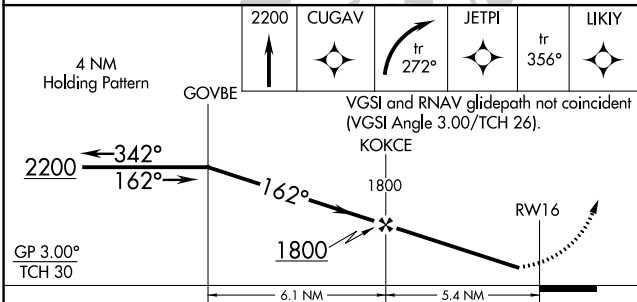
NA DME/DME RNP-0.3 NA. When local altimeter setting not received, use Bethel altimeter setting. Rwy 16 helicopter visibility reduction 1 SM NA. Procedure NA at night for Cat C and D aircraft.

MISSED APPROACH: Climb to 2200 direct CUGAV and right turn on track 272° to JETPI on track 356° to LIKIY and hold.

| | | |
|---------------------------|--|----------------------|
| AWOS-3P 121.425 | ANCHORAGE CENTER 125.2 372.0 | CTAF 122.9 |
|---------------------------|--|----------------------|



| | |
|---------|---------|
| ELEV 17 | TDZE 17 |
|---------|---------|



| CATEGORY | A | B | C | D |
|----------|-------------------|-------------|------------------------|------------------------|
| LPV DA | 298-1 281 (300-1) | | | |
| LNAV MDA | 500-1 | 483 (500-1) | 500-1½ 483 (500-1½) | 500-1½ 483 (500-1½) |
| CIRCLING | 500-1 | 483 (500-1) | 540-1½ 523 (600-1½) | 680-2 663 (700-2) |

AK, 26 DEC 2024 to 20 FEB 2025

AK, 26 DEC 2024 to 20 FEB 2025