

WAAS CH <b>58331</b> <b>W16A</b>	APP CRS <b>166°</b>	Rwy Idg <b>6400</b> TDZE <b>220</b> Apt Elev <b>220</b>
--	------------------------	---

# RNAV (GPS) RWY 16

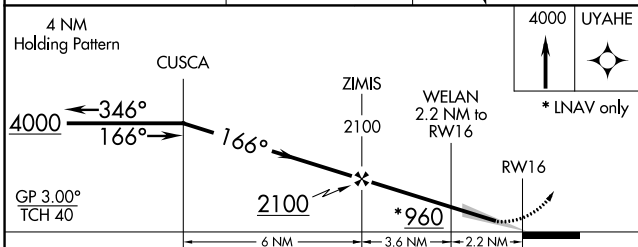
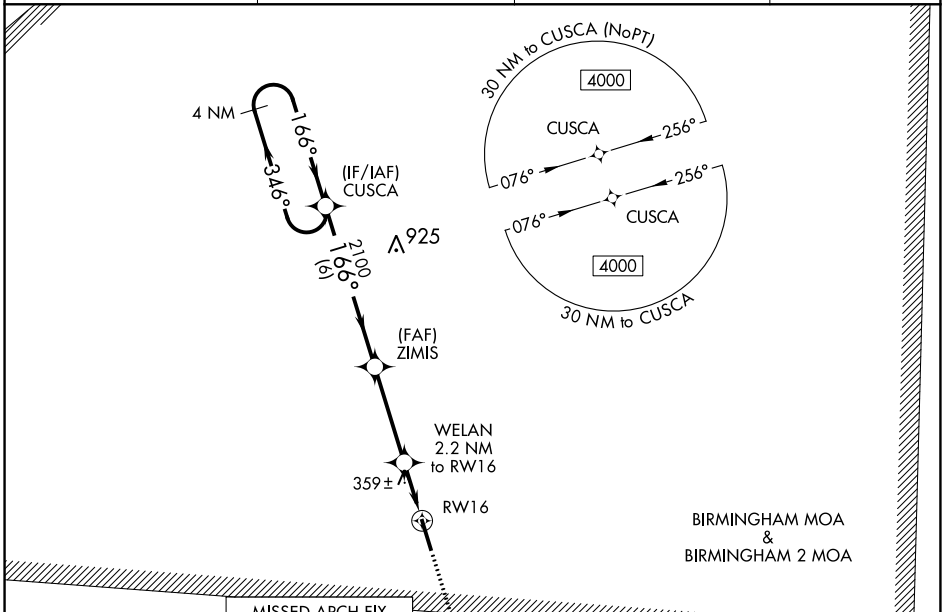
VAIDEN FLD (A08)

**▽** Baro-VNAV NA. DME/DME RNP-0.3 NA. Use Demopolis altimeter setting; when not received, use Tuscaloosa altimeter setting and increase all DA 27 feet, increase all MDA 40 feet, increase all LPV and LNAV/VNAV visibilities 1/8 mile, and increase Circling Cat D visibility 1/4 mile.

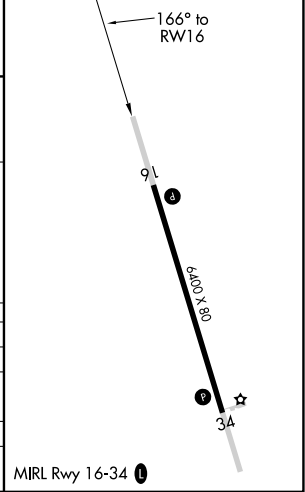
**▲ NA**

MISSED APPROACH: Climb to 4000 direct UYAHE and hold, continue climb-in-hold to 4000.

AWOS-3P <b>119.350</b>	DYA AWOS-3P <b>119.475</b>	ATLANTA CENTER <b>132.25 263.025</b>	CTAF <b>122.9 0</b>
---------------------------	-------------------------------	---	------------------------



ELEV 220	TDZE 220
----------	----------



CATEGORY	A	B	C	D
LPV DA	552-1 1/8 332 (400-1 1/8)			
LNAV/VNAV DA	736-1 3/4 516 (600-1 3/4)			
LNAV MDA	700-1	480 (500-1)	700-1 3/8	480 (500-1 3/8)
<b>C</b> CIRCLING	740-1 520 (600-1)	760-1 540 (600-1)	760-1 1/2 540 (600-1 1/2)	880-2 660 (700-2)

MIRL Rwy 16-34 0

SE-4, 26 DEC 2024 to 23 JAN 2025

SE-4, 26 DEC 2024 to 23 JAN 2025