

APP CRS	Rwy Idg	<b>4904</b>
<b>064°</b>	TDZE	<b>1575</b>
	Apt Elev	<b>1593</b>

# RNAV (GPS) RWY 6

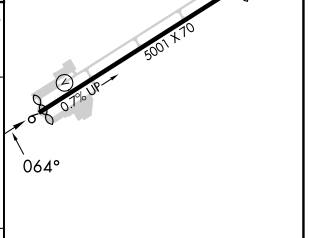
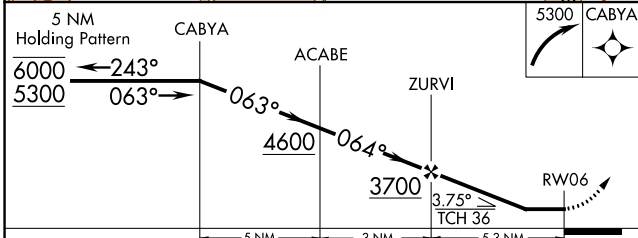
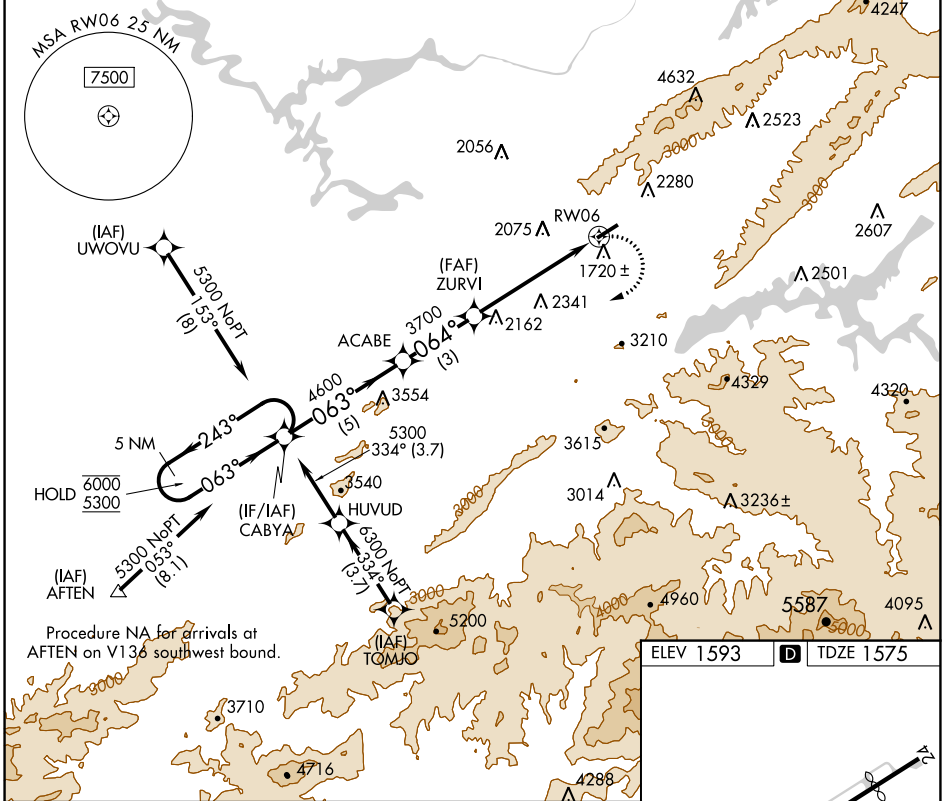
ELIZABETHTON MUNI (ØA.9)

RNP APCH - GPS.

**⚠** Circling NA northwest of Rwy 6-24. Procedure NA at night.  
**⚠** Rwy 6 helicopter visibility reduction below 1 SM NA.  
**⚠** -13°C

MISSED APPROACH: (Do not exceed 200K until CABYA)  
 Climbing right turn to 5300  
 direct CABYA and hold.

AWOS-3PT <b>135.675</b>	TRI CITY APP CON ★ <b>134.425 349.0</b>	UNICOM <b>123.0 (CTAF) 0</b>
----------------------------	--	---------------------------------



CATEGORY	A	B	C	D
LNVA MDA	3080-1¼ 1505 (1500-1¼)	3160-1½ 1585 (1600-1½)	3260-3 1685 (1700-3)	NA
<b>C</b> CIRCLING	3080-1¼ 1487 (1500-1¼)	3160-1½ 1567 (1600-1½)	3260-3 1667 (1700-3)	NA

ELEV 1593	<b>D</b> TDZE 1575
REIL Rwy 6 0	LIRL Rwy 6-24 0

SE-1, 26 DEC 2024 to 23 JAN 2025

SE-1, 26 DEC 2024 to 23 JAN 2025