

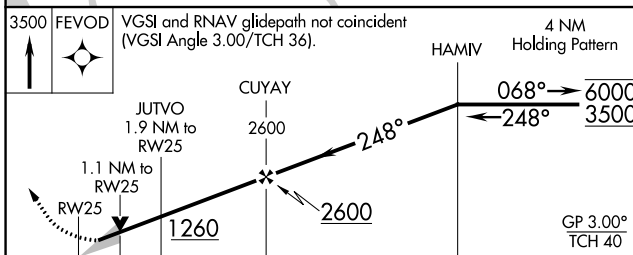
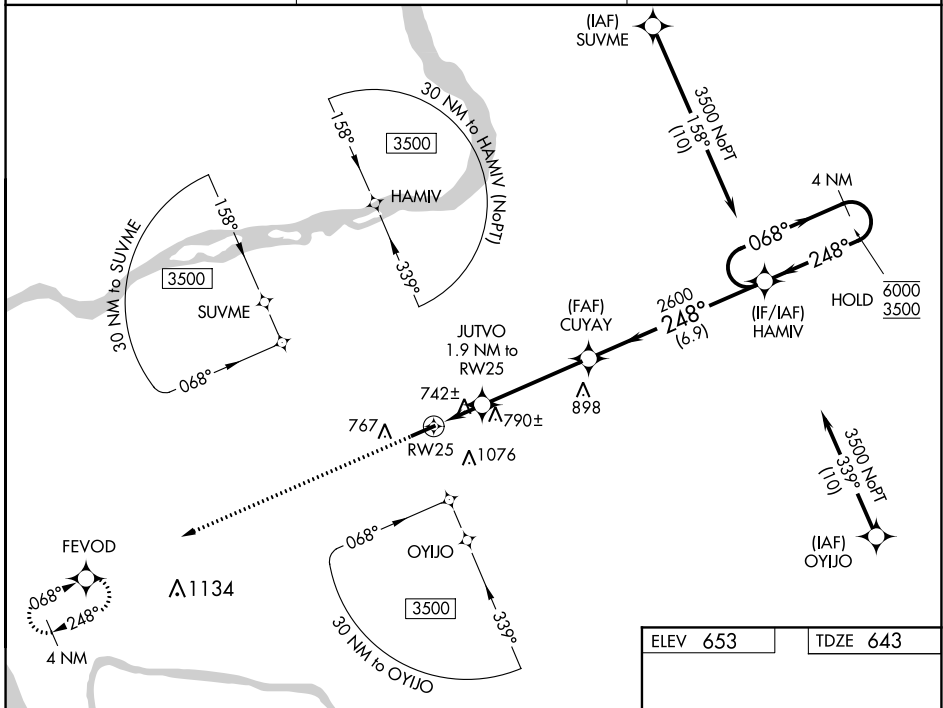
WAAS CH 86631 W25A	APP CRS 248°	Rwy Idg TDZE Apt Elev	5001 643 653
--	------------------------	-----------------------------	---

RNAV (GPS) RWY 25

MARION-CRITTENDEN COUNTY JAMES C JOHNSON RGNL (GDA)

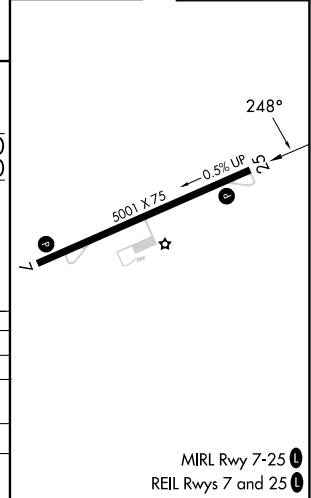
RNP APCH - GPS.	For uncompensated Baro-VNAV systems, LNAV/VNAV NA below -16°C or above 54°C.	MISSED APPROACH: Climb to 3500 direct FEVOD and hold.
-----------------	--	---

AWOS-3P 118.15	MEMPHIS CENTER 133.65 292.15	CTAF 122.9
--------------------------	--	----------------------



ELEV 653	TDZE 643
----------	----------

3500	FEVOD	VGSI and RNAV glidepath not coincident (VGSI Angle 3.00/TCH 36).		4 NM Holding Pattern	
		JUTVO 1.9 NM to RW25	CUYAY 2600	HAMIV	
		1.1 NM to RW25	1260	2600	
		1.1	0.8	4.2 NM	6.9 NM
CATEGORY		A	B	C	D
LPV DA			893-1	250 (300-1)	
LNAV/VNAV DA			945-1	302 (300-1)	
LNAV MDA			1000-1	357 (400-1)	
CIRCLING		1160-1 507 (600-1)	1360-1 707 (800-1)	1380-2 727 (800-2)	1380-2 1/4 727 (800-2 1/4)



SE-1, 26 DEC 2024 to 23 JAN 2025

SE-1, 26 DEC 2024 to 23 JAN 2025