

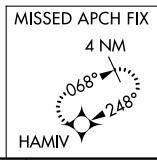
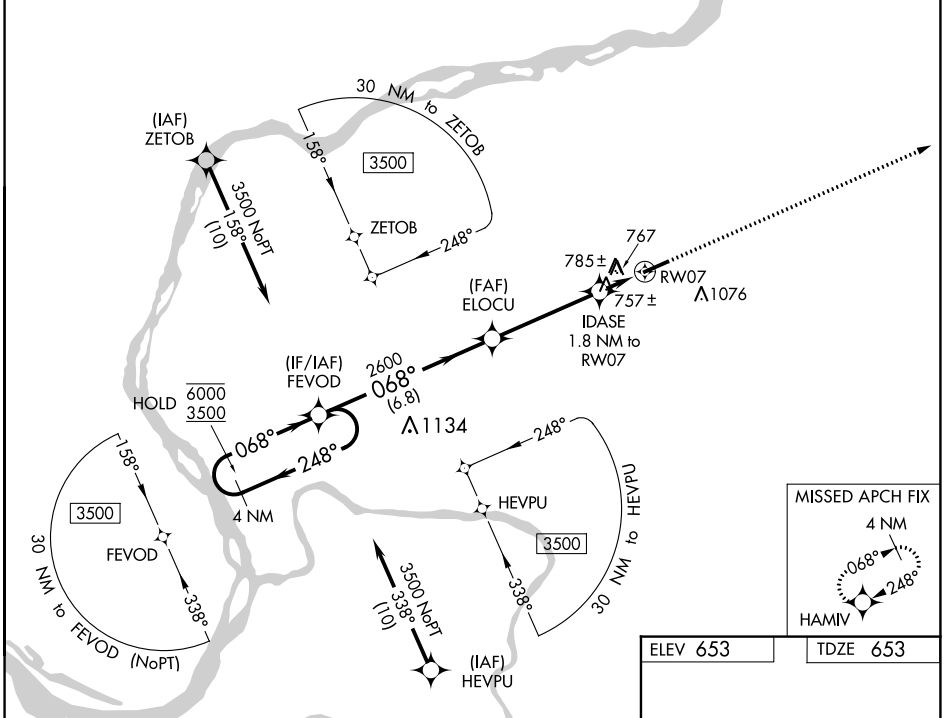
WAAS CH 90531 W07A	APP CRS 068°	Rwy Idg TDZE Apt Elev	5001 653 653
--	------------------------	-----------------------------	---

RNAV (GPS) RWY 7

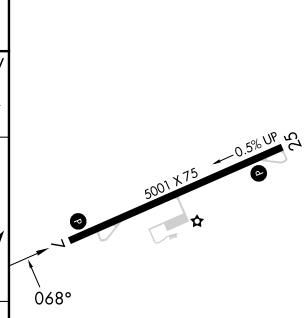
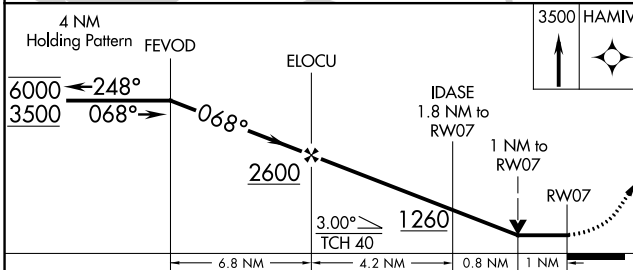
MARION-CRITTENDEN COUNTY JAMES C JOHNSON RGNL (GDA)

RNP APCH - GPS.		MISSED APPROACH: Climb to 3500 direct HAMIV and hold.
<div style="display: flex; justify-content: space-between;"> <div style="width: 30%;"> <p>▼ ▲</p> <p>Rwy 7 helicopter visibility reduction below 3/4 SM NA.</p> </div> </div>		

AWOS-3P 118.15	MEMPHIS CENTER 133.65 292.15	CTAF 122.9
--------------------------	--	----------------------



ELEV 653	TDZE 653
----------	----------



CATEGORY	A	B	C	D
LP MDA		1020-1	367 (400-1)	
LNAV MDA	1040-1	387 (400-1)	1040-1 1/8	387 (400-1 1/8)
C CIRCLING	1160-1 507 (600-1)	1360-1 707 (800-1)	1380-2 727 (800-2)	1380-2 1/4 727 (800-2 1/4)

MIRL Rwy 7-25 **1**
REIL Rwys 7 and 25 **1**

RNAV (GPS) RWY 7

SE-1, 26 DEC 2024 to 23 JAN 2025

SE-1, 26 DEC 2024 to 23 JAN 2025