

WAAS CH <b>45631</b> <b>W23A</b>	APP CRS <b>230°</b>	Rwy Idg TDZE Apt Elev	<b>4099</b> <b>573</b> <b>584</b>
--	------------------------	-----------------------------	---

# RNAV (GPS) RWY 23

PRINCETON-CALDWELL COUNTY (2M $\emptyset$ )

RNP APCH - GPS.

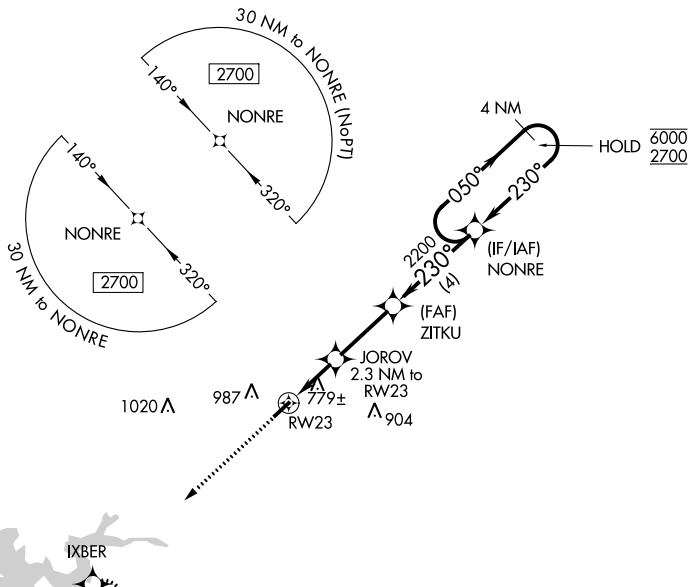
**▼** Baro-VNAV NA. Use HOP altimeter setting; when not received, use 210 altimeter setting and increase LPV DA to 908 feet, increase LNAV/VNAV DA to 1224 feet, increase all MDAs 20 feet.  
**▲ NA**

MISSED APPROACH:  
Climb to 2700 direct  
IXBER and hold.

HOP ATIS  
**125.175 308.4**

CAMPBELL APP CON  
**118.1 269.525**

UNICOM  
**122.8 (CTAF)** **📻**



SE-1, 26 DEC 2024 to 23 JAN 2025

SE-1, 26 DEC 2024 to 23 JAN 2025

ELEV 584	TDZE 573
----------	----------

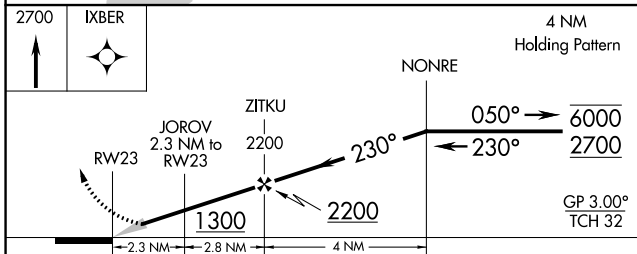
2700	IXBER	4 NM Holding Pattern
------	-------	----------------------

2700	IXBER	4 NM Holding Pattern
JOROV 2.3 NM to RWY 23	ZITKU 2200	NONRE
050° → 6000	← 230° 2700	
GP 3.00° TCH 32		

2700	IXBER	4 NM Holding Pattern
------	-------	----------------------

2700	IXBER	4 NM Holding Pattern
JOROV 2.3 NM to RWY 23	ZITKU 2200	NONRE
050° → 6000	← 230° 2700	
GP 3.00° TCH 32		

MIRL Rwy 5-23 <b>📻</b>	REIL Rwy 5 and 23 <b>📻</b>
------------------------	----------------------------



CATEGORY	A	B	C	D
LPV DA	899-1	326 (400-1)		NA
LNAV/VNAV DA	1215-1 $\frac{7}{8}$	642 (700-1 $\frac{7}{8}$ )		NA
LNAV MDA	1120-1	547 (600-1)		NA
CIRCLING	1420-1 $\frac{1}{4}$	836 (900-1 $\frac{1}{4}$ )		NA