

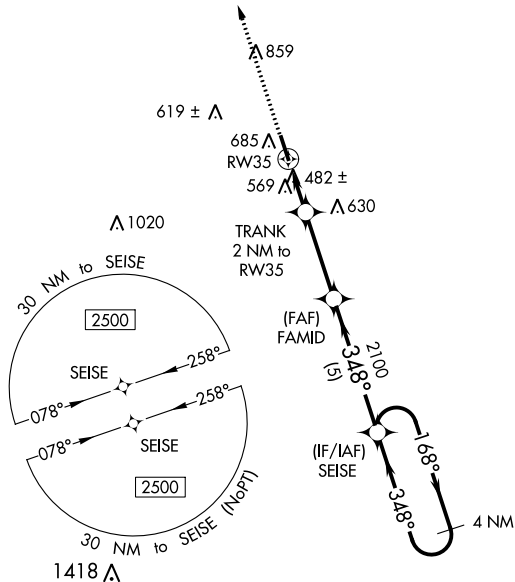
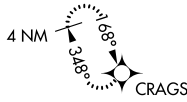
WAAS CH 82040 W35A	APP CRS 348°	Rwy Idg TDZE Apt Elev	5005 388 389
--	------------------------	-----------------------------	---

RNAV (GPS) RWY 35

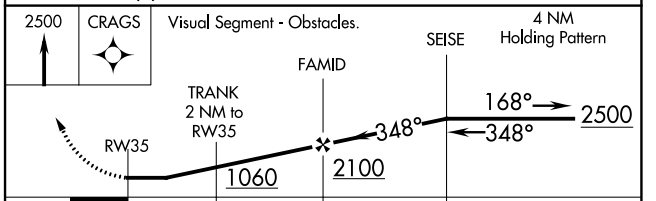
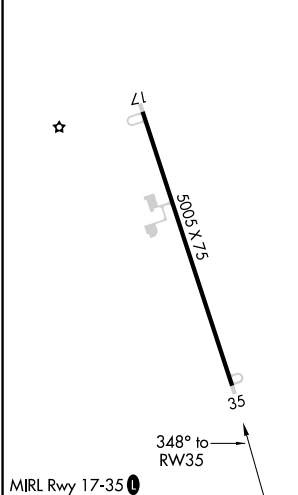
TURNER COUNTY (75J)

<p>▼ When Fitzgerald altimeter setting not received, procedure NA. ▲ NA Rwy 35 helicopter visibility reduction below 1 SM NA. DME/DME RNP-0.3 NA. Procedure NA at night.</p>	<p>MISSED APPROACH: Climb to 2500 direct CRAGS and hold.</p>
--	--

FZG AWOS-3 118.625	JACKSONVILLE CENTER 125.75 363.075	UNICOM 122.7 (CTAF) 0
------------------------------	--	---------------------------------



ELEV 389	TDZE 388
----------	----------



CATEGORY	A	B	C	D
LP MDA	780-1	392 (400-1)	780-1 $\frac{1}{8}$	392 (400-1 $\frac{1}{8}$)
LNAV MDA	880-1	492 (500-1)	880-1 $\frac{3}{8}$	492 (500-1 $\frac{3}{8}$)
C CIRCLING	1100-1	711 (800-1)	1140-2 $\frac{1}{4}$ 751 (800-2 $\frac{1}{4}$)	1260-2 $\frac{3}{4}$ 871 (900-2 $\frac{3}{4}$)

SE-4, 26 DEC 2024 to 23 JAN 2025

SE-4, 26 DEC 2024 to 23 JAN 2025