

WAAS CH 45941 W03A	APP CRS 033°	Rwy Idg TDZE 1481 Apt Elev 1486
--	------------------------	---

RNAV (GPS) RWY 3

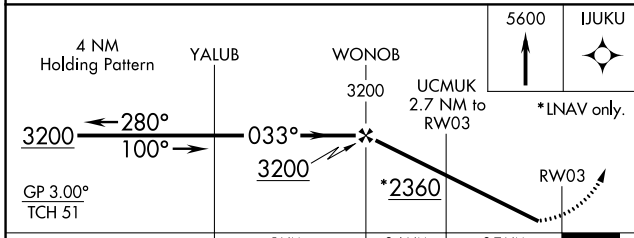
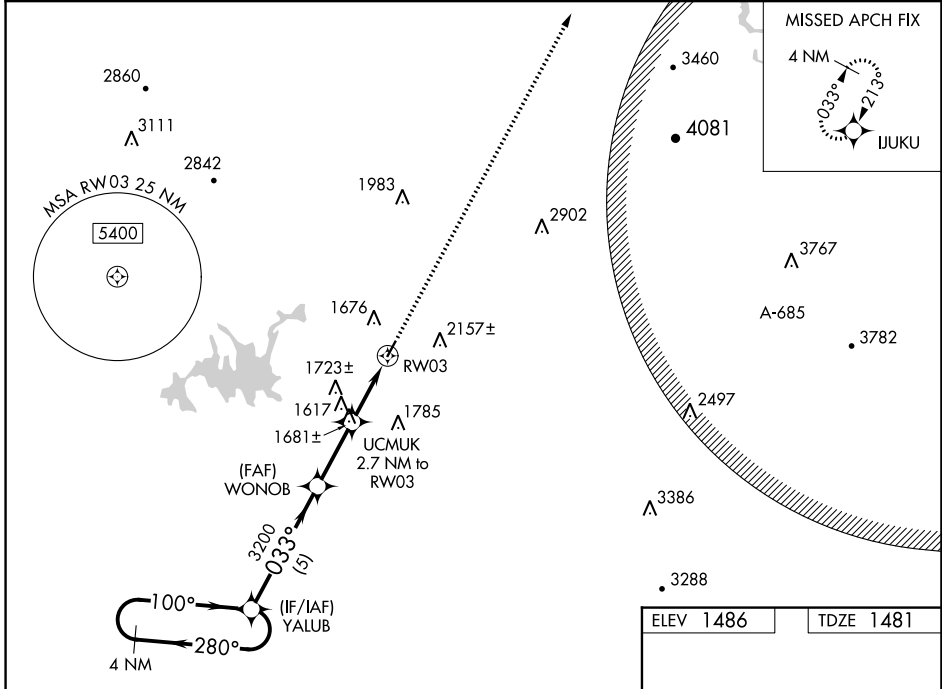
GILMER COUNTY (49A)

RNP APCH.

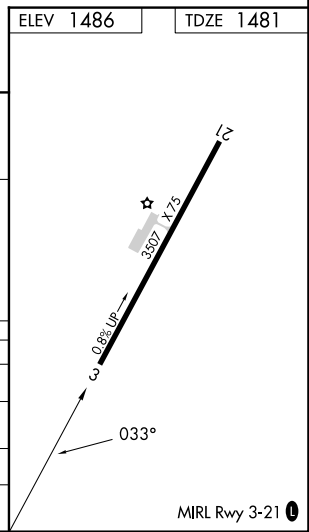
▽
▲ For uncompensated Baro-VNAV systems, LNAV/VNAV NA below -17°C (2°F) or above 54°C (130°F). Rwy 3 helicopter visibility reduction below 1 SM NA. Procedure NA at night.

MISSED APPROACH:
Climb to 5600 direct IJUKU and hold, continue climb-in-hold to 5600.

AWOS-3 118.075	ATLANTA CENTER 133.1 342.425	UNICOM 123.0 (CTAF)
--------------------------	--	-------------------------------



CATEGORY	A	B	C	D
LPV DA		1731-1	250 (300-1)	
LNAV/VNAV DA		1790-1	309 (400-1)	
LNAV MDA	1880-1	399 (400-1)	1880-1 $\frac{1}{8}$	399 (400-1 $\frac{1}{8}$)
C CIRCLING	1980-1 494 (500-1)	2560-1 $\frac{1}{2}$ 1074 (1100-1 $\frac{1}{2}$)	2560-3	1074 (1100-3)



SE-4, 26 DEC 2024 to 23 JAN 2025

SE-4, 26 DEC 2024 to 23 JAN 2025