

WAAS CH 56643 W05A	APP CRS 049°	Rwy Idg TDZE Apt Elev	4700 5377 5377
--	------------------------	-----------------------------	---

RNAV (GPS) RWY 5

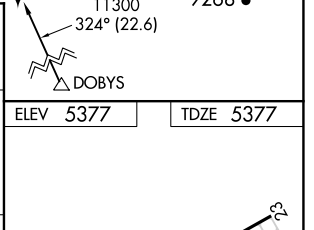
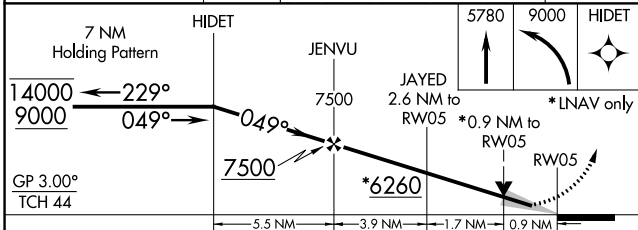
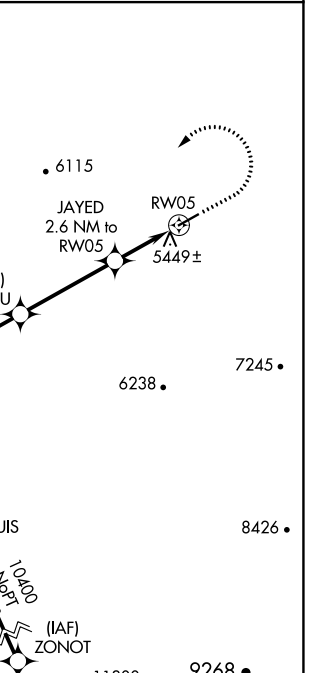
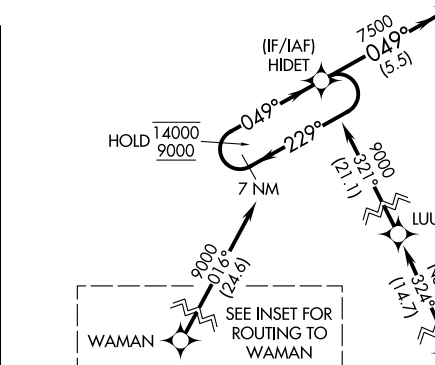
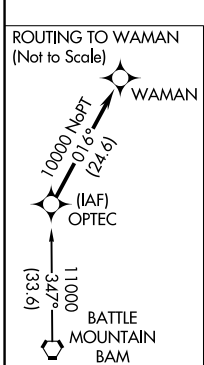
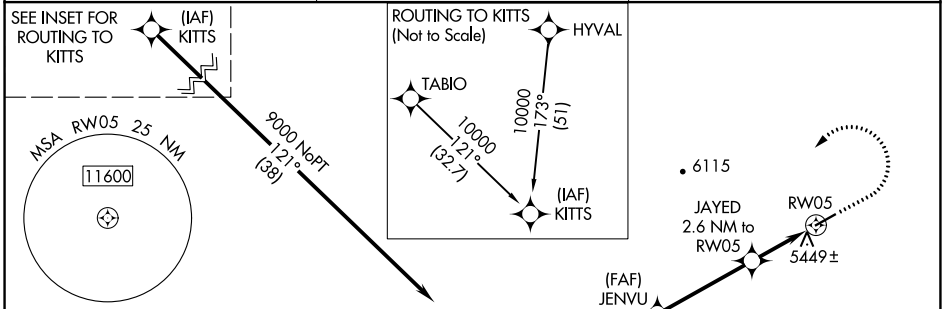
OWYHEE (10U)

RNP APCH.

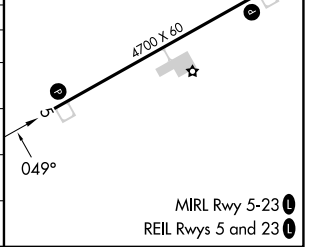
▼ Circling Cats C/D NA southeast of Rwy 5-23.
▲ For uncompensated Baro-VNAV systems, LNAV/VNAV NA below -25°C or above 54°C.

MISSED APPROACH: Climb to 5780 then climbing left turn to 9000 direct HIDE1 and hold, continue climb-in-hold to 9000.
 # Missed approach requires minimum climb of 250 feet per NM to 6500.

AWOS-3PT 118.525	SALT LAKE CENTER 118.05 363.0	CTAF 122.90
----------------------------	---	-----------------------



CATEGORY	A	B	C	D
LPV DA		5577-1	200 (200-1)	
LNAV/VNAV DA#		5627-1	250 (300-1)	
LNAV/VNAV DA	5627-1	250 (300-1)	5909-1½ 532 (600-1½)	5922-1½ 545 (600-1½)
LNAV MDA	5700-1	323 (400-1)		5960-1¾ 583 (600-1¾)
C CIRCLING	5760-1 383 (400-1)	5840-1 463 (500-1)	5840-1½ 463 (500-1½)	6860-3 1483 (1500-3)



SW-4, 26 DEC 2024 to 23 JAN 2025

SW-4, 26 DEC 2024 to 23 JAN 2025