

APP CRS	Rwy Idg	N/A
064°	TDZE	N/A
	Apt Elev	767

RNAV (GPS)-A

FLABOB (RIR)

RNP APCH.

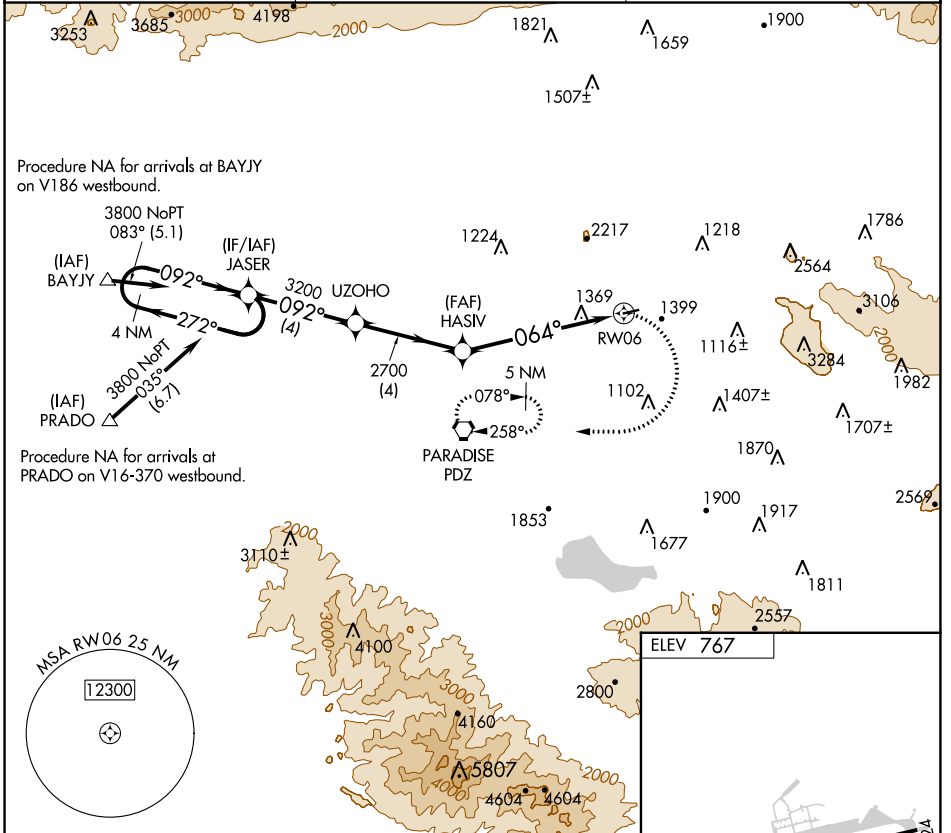
Procedure NA at night. Use Riverside Muni altimeter setting; when not received, use Ontario altimeter setting and increase all MDA 60 feet.

MISSED APPROACH: Climbing right turn to 3200 direct PDZ VORTAC and hold.

RAL ASOS
128.8

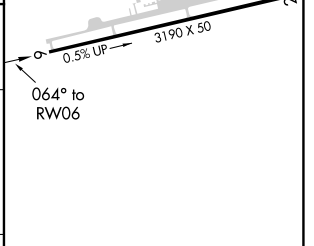
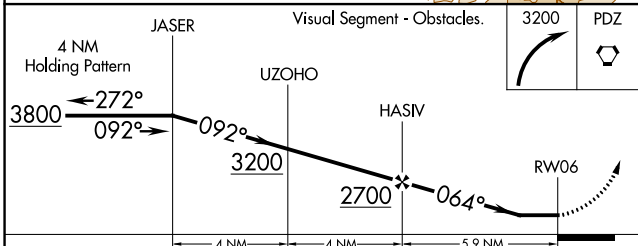
SOCAL APP CON
135.4 377.125

UNICOM
122.8 (CTAF)



SW-3, 26 DEC 2024 to 23 JAN 2025

SW-3, 26 DEC 2024 to 23 JAN 2025



CATEGORY	A	B	C	D
CIRCLING	1860-1¼ 1093 (1100-1¼)	2220-1½ 1453 (1500-1½)	NA	

MIRL Rwy 6-24