

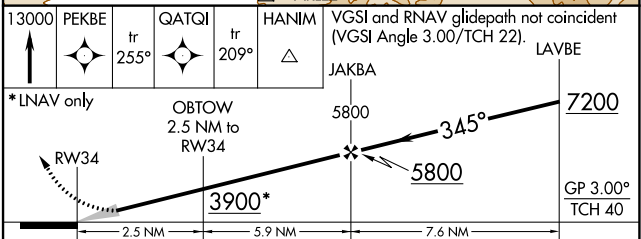
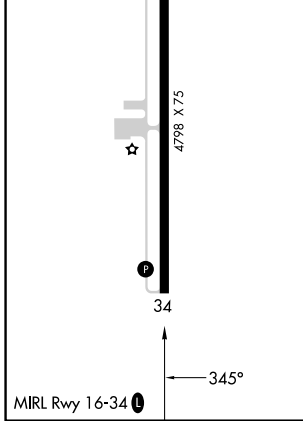
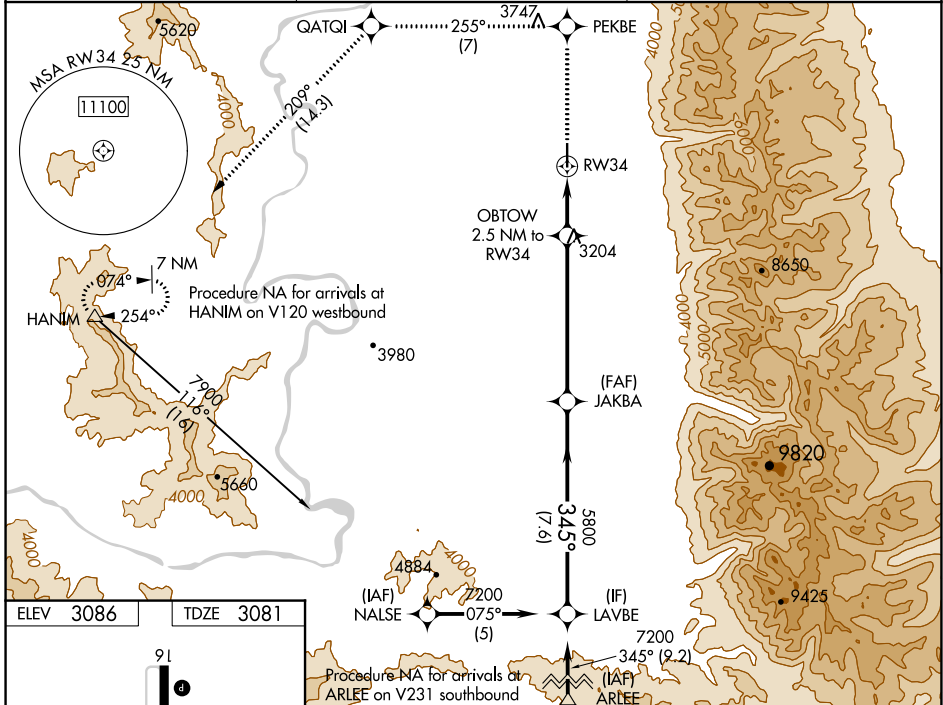
WAAS CH 86614 W34A	APP CRS 345°	Rwy Idg TDZE 4798 3081	Apt Elev 3086
--	------------------------	---	-------------------------

RNAV (GPS) RWY 34

RONAN (7S ϕ)

RNP APCH.	MISSED APPROACH: Climb to 13000 direct PEKBE and on track 255° to QATQI and on track 209° to HANIM and hold, continue climb-in-hold to 13000.
<p>NA Baro-VNAV NA when using Missoula altimeter setting. For uncompensated Baro-VNAV systems, procedure NA below -21°C or above 54°C. Circling NA east of Rwy 16-34. When local altimeter setting not received, use Missoula altimeter setting and increase LPV DA to 3545 and all visibilities $\frac{3}{8}$ SM, LNAV/VNAV DA to 3545 and all visibilities $\frac{3}{8}$ SM; and increase all MDAs 120 feet.</p>	

AWOS-2 119.925	SALT LAKE CITY CENTER 127.075 244.875	AUNICOM 122.8 (CTAF)
--------------------------	---	--------------------------------



CATEGORY	A	B	C	D
LPV DA	3438-1	357 (400-1)	NA	
LNAV/VNAV DA	3438-1 $\frac{1}{4}$	357 (400-1 $\frac{1}{4}$)	NA	
LNAV MDA	3520-1	439 (500-1)	NA	
C CIRCLING	3560-1	474 (500-1)	NA	

NW-1, 26 DEC 2024 to 23 JAN 2025

NW-1, 26 DEC 2024 to 23 JAN 2025