

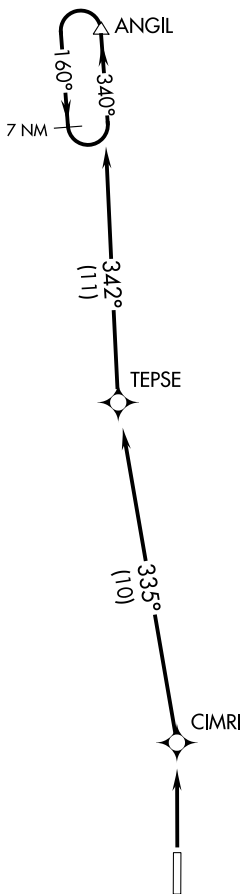
(RONAN3.ANGIL) 22363

RONAN THREE DEPARTURE (RNAV) AL-9978 (FAA)

RONAN (7S0)
RONAN, MONTANA

SALT LAKE CITY CENTER
127.075 244.875
CTAF
122.8

**TOP ALTITUDE:
10000**



NOTE: RNAV 1.

NOTE: GPS required.

TAKEOFF MINIMUMS

Rwy 16: NA, see HANIM DEPARTURE

Rwy 34: Standard

NOTE: Chart not to scale.



DEPARTURE ROUTE DESCRIPTION

TAKEOFF RUNWAY 34: Climb to 10000 direct CIMRI and on track 335° to TEPSE and on track 342° to ANGIL, continue climb in ANGIL holding pattern to cross ANGIL at or above MEA for route of flight before proceeding on course.

RONAN THREE DEPARTURE (RNAV)

(RONAN3.ANGIL) 17AUG17

RONAN, MONTANA
RONAN (7S0)

NW-1, 26 DEC 2024 to 23 JAN 2025

NW-1, 26 DEC 2024 to 23 JAN 2025