

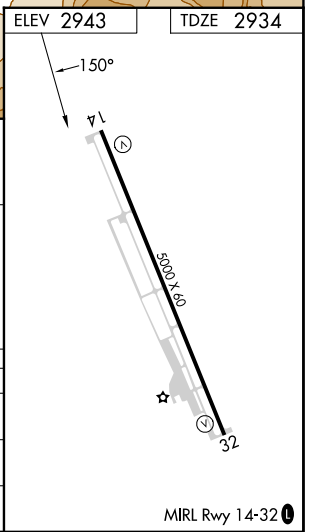
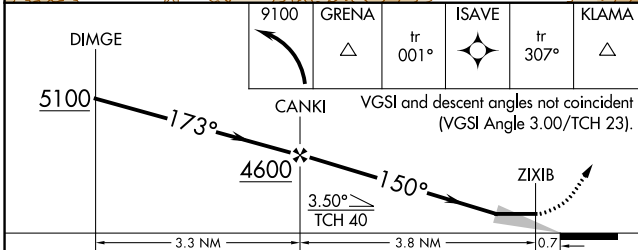
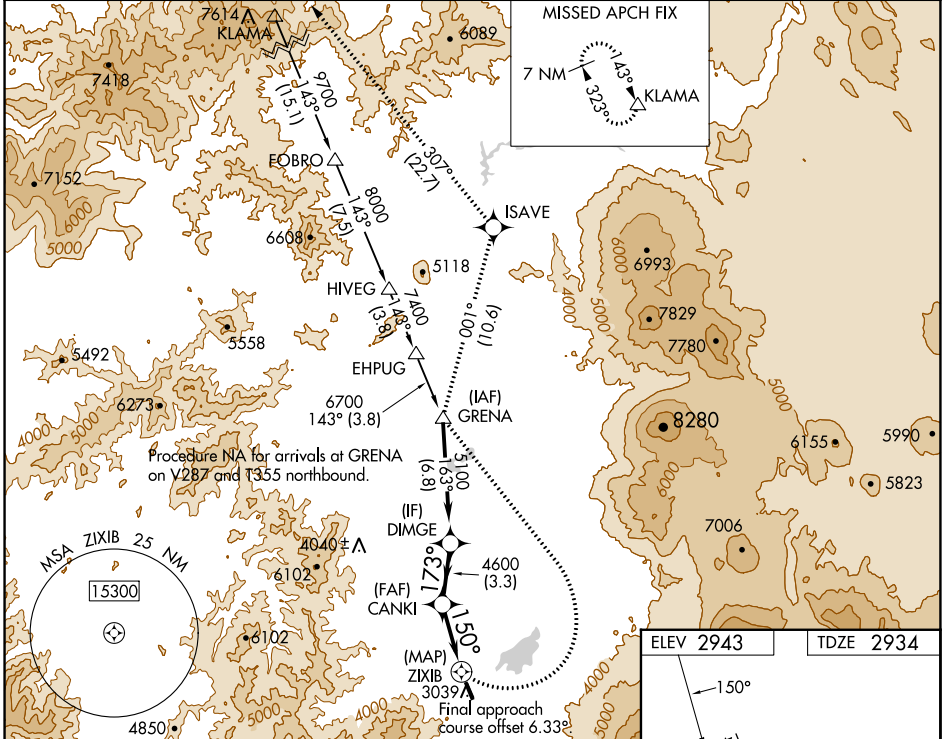
APP CRS	Rwy Idg	5000
150°	TDZE	2934
	Apt Elev	2943

RNAV (GPS) RWY 14

WEED (O46)

RNP APCH - GPS.	MISSED APPROACH: (Do not exceed 185K until GRENA) Climbing left turn to 9100 direct GRENA then on track 001° to ISAVE then on track 307° to KLAMA and hold.
<p>⚠ Circling NA southwest of Rwy 14-32.</p> <p>⚠ NA Use Montague altimeter setting.</p>	*Missed approach requires minimum climb of 325 feet per NM to 4000.

SEATTLE CENTER 124.85 306.3	UNICOM 122.7 (CTAF) 0
---------------------------------------	---------------------------------



CATEGORY	A	B	C	D
LNAV MDA*	3440-1	506 (500-1)	3580-1 ⁷ / ₈ 646 (700-1 ⁷ / ₈)	3700-2 ¹ / ₂ 766 (800-2 ¹ / ₂)
LNAV MDA	3440-1 506 (500-1)	3480-1 546 (600-1)	3780-2 ¹ / ₂ 846 (900-2 ¹ / ₂)	3820-2 ¹ / ₂ 886 (900-2 ¹ / ₂)
CIRCLING	3680-1 737 (800-1)	3840-1 ¹ / ₄ 897 (900-1 ¹ / ₄)	4220-3 1277 (1300-3)	4440-3 1497 (1500-3)

SW-2, 26 DEC 2024 to 23 JAN 2025

SW-2, 26 DEC 2024 to 23 JAN 2025