

WAAS CH <b>68560</b> <b>W34B</b>	APP CRS <b>340°</b>	Rwy Idg TDZE <b>4529</b> Apt Elev <b>4534</b>
--	------------------------	---

# RNAV (GPS) RWY 34

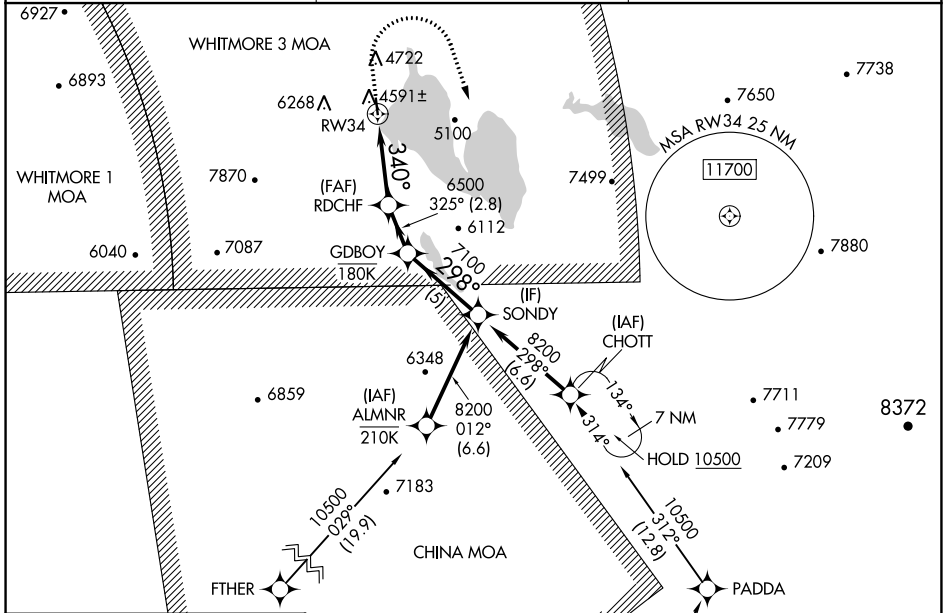
ROGERS FLD (005)

RNP APCH - GPS.

**▽** When local altimeter setting not received, procedure NA.  
**▲** Rwy 34 helicopter visibility reduction below 3/4 SM NA.  
 Circling NA for Cat C west of Rwy 16-34. Circling NA at night.

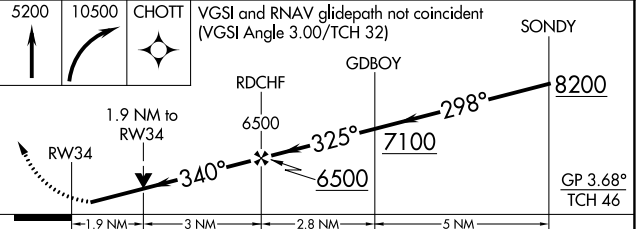
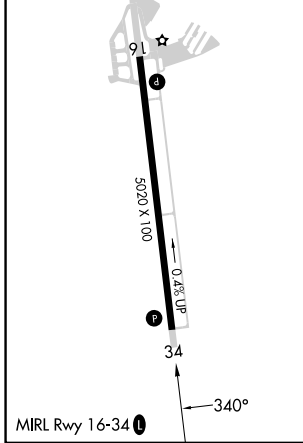
MISSED APPROACH: (Do not exceed 165K until initial turn completion) Climb to 5200 then climbing right turn to 10500 direct CHOTT and hold, continue climb-in-hold to 10500.  
 \*Missed approach requires a minimum climb of 377 feet per NM to 7680 feet.

AWOS-3 <b>118.275</b>	OAKLAND CENTER <b>132.2 350.3</b>	UNICOM <b>122.8(CTAF)</b>
--------------------------	--------------------------------------	------------------------------



ELEV 4534	TDZE 4529
-----------	-----------

Procedure NA for arrivals at MRGGO on V200 westbound.



CATEGORY	A	B	C	D
LPV DA*	4779-3/4	250 (300-3/4)	4829-7/8 300 (300-7/8)	NA
LNAV MDA*	5160-1	631 (700-1)	5160-1 3/4 631 (700-1 3/4)	NA
LNAV MDA	5360-1 831 (900-1)	5360-1 1/4 831 (900-1 1/4)	5360-2 1/2 831 (900-2 1/2)	NA
CIRCLING	5440-1 1/4 906 (1000-1 1/4)	5660-1 1/2 1126 (1200-1 1/2)	5660-3 1126 (1300-3)	NA

SW-2, 26 DEC 2024 to 23 JAN 2025

SW-2, 26 DEC 2024 to 23 JAN 2025