

WAAS CH 49203 W26A	APP CRS 256°	Rwy Idg TDZE 4651 Apt Elev 4900
---------------------------------	------------------------	---

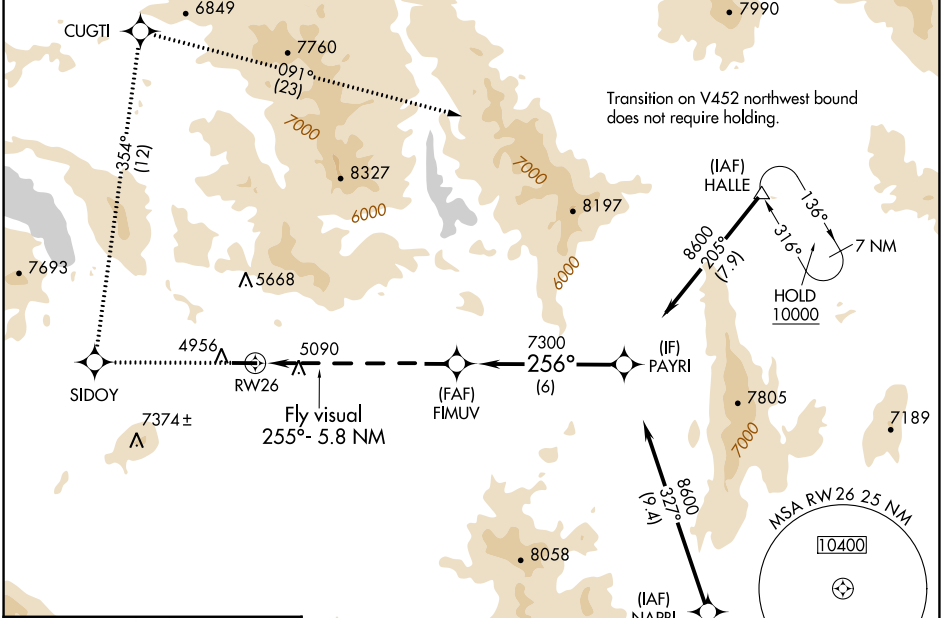
RNAV (GPS) Z RWY 26

NERVINO (002)

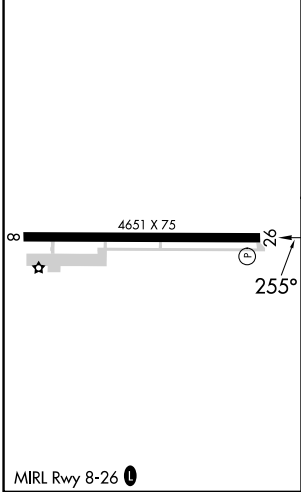
NA Use Reno/Stead altimeter setting; when not received, use Reno/Tahoe Intl altimeter setting and increase DA 180 feet.
13°C DME/DME RNP -0.3 NA.
 Helicopter visibility reduction below 3/4 SM not authorized.

MISSED APPROACH: Climb to 10000 direct SIDOY and right turn on track 354° to CUGTI and right turn on track 091° to HALLE and hold.

AWOS-2 119.35	RTS AWOS-3 135.175	NORCAL APP CON 126.3 353.9	UNICOM 122.8 (CTAF) 0
-------------------------	------------------------------	--------------------------------------	--



ELEV 4900	TDZE 4896
-----------	-----------



10000	SIDOY	CUGTI	HALLE	VGSJ and RNAV glidepath not coincident (VGSJ Angle 3.50/TCH 50).
↑	↻ tr 354°	↻ tr 091°	△	
Fly visual 255°- 5.8 NM RWY26		FIMUV 7300	PAYRI 8600	GP 3.00° TCH 55
7.2 NM		6 NM		
CATEGORY	A	B	C	D
LPV DA	6787-2 1891 (1900-2)		6787-3 1891 (1900-3)	

SW-2, 26 DEC 2024 to 23 JAN 2025

SW-2, 26 DEC 2024 to 23 JAN 2025