

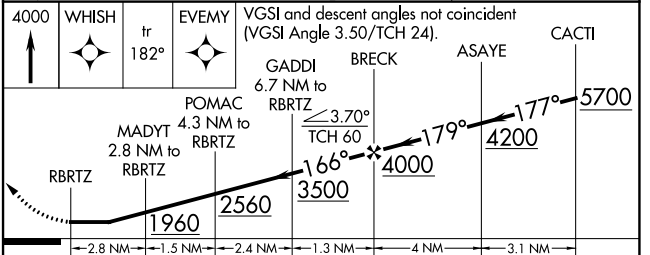
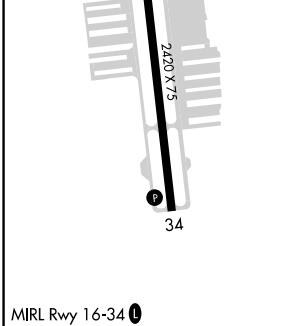
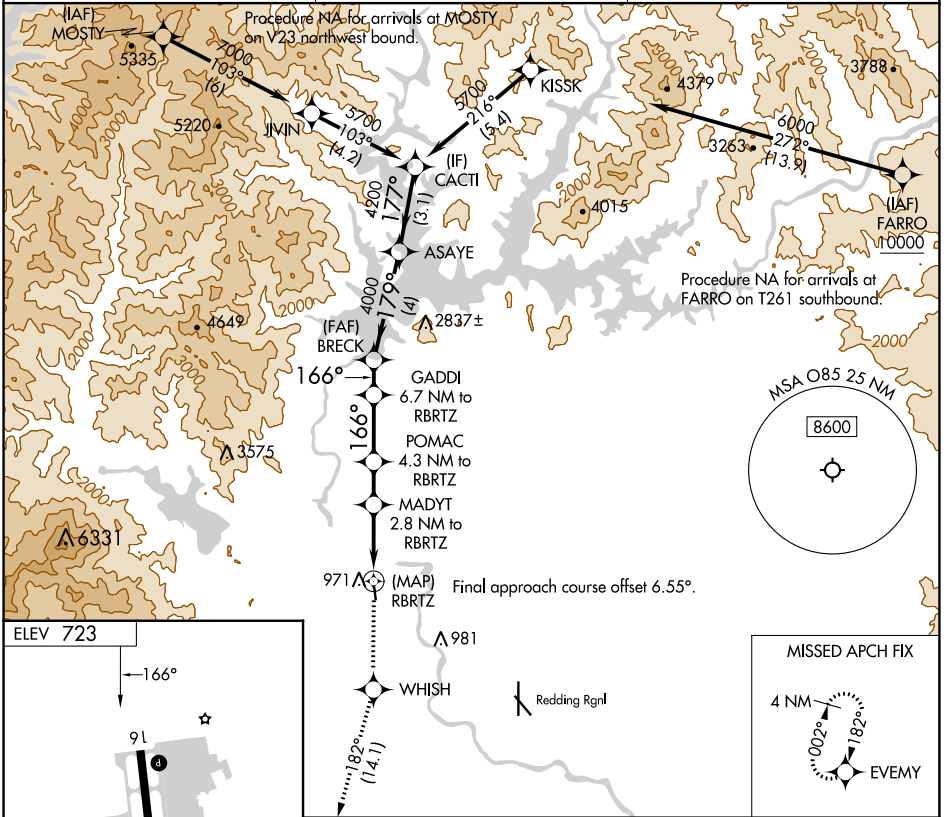
APP CRS	Rwy Idg	N/A
166°	TDZE	N/A
	Apt Elev	723

# RNAV (GPS)-A

BENTON FLD (O85)

RNP APCH - GPS.	MISSED APPROACH: Climb to 4000 direct WHISH and on track 182° to EVMY and hold.
<p>Procedure NA at night. Rwy 16, 34 helicopter visibility reduction below 1 SM NA. When local altimeter setting not received, use Redding Rgnl altimeter setting and increase all MDAs 60 feet.</p>	

AWOS-2 <b>118.675</b>	OAKLAND CENTER <b>132.2 350.3</b>	UNICOM <b>122.8 (CTAF) 0</b>
--------------------------	--------------------------------------	---------------------------------



MIRL Rwy 16-34	<b>C</b> CIRCLING	A	B	C	D
		1340-1 617 (700-1)	1600-1¼ 877 (900-1¼)		NA

SW-2, 26 DEC 2024 to 23 JAN 2025

SW-2, 26 DEC 2024 to 23 JAN 2025