

APP CRS 115°	Rwy Idg 2660
	TDZE 30
	Apt Elev 30

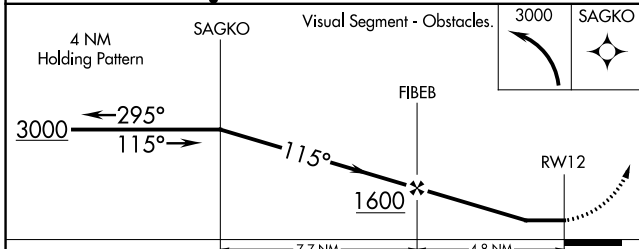
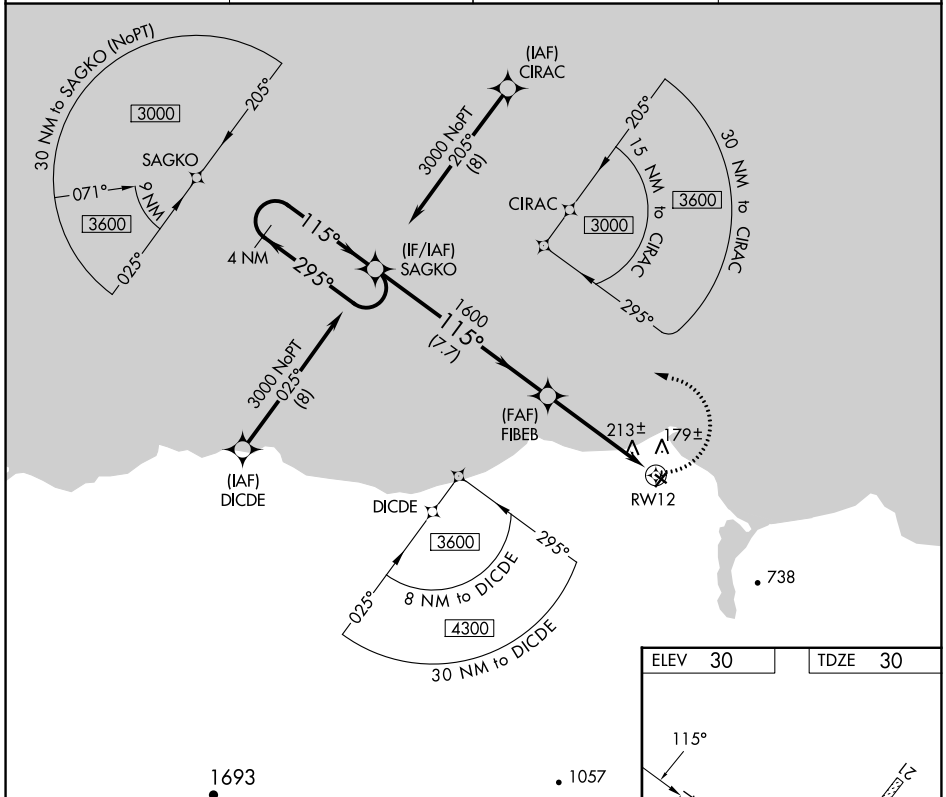
RNAV (GPS) RWY 12

DEERING (DEE)(PADE)

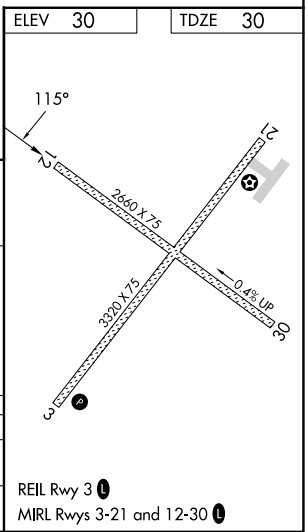
⚠ DME/DME RNP-0.3 NA.
⚠ Rwy 12 helicopter visibility reduction below 1 SM NA.
⚠ -39°C Straight-in Rwy 12 NA at night, Circling Rwy 12, 30 NA at night.

MISSED APPROACH: Climbing left turn to 3000 direct SAGKO and hold.

ASOS 135.5	ANCHORAGE CENTER 119.2 263.0	KOTZEBUE RADIO 122.25	CTAF 122.9
----------------------	--	---------------------------------	----------------------



CATEGORY	A	B	C	D
LNVA MDA	520-1	490 (500-1)	520-1 $\frac{3}{8}$ 490 (500-1 $\frac{3}{8}$)	NA
C CIRCLING	680-1 650 (700-1)	840-1 810 (900-1)	840-2 $\frac{1}{2}$ 810 (900-2 $\frac{1}{2}$)	NA



AK, 26 DEC 2024 to 20 FEB 2025

AK, 26 DEC 2024 to 20 FEB 2025