

(GKN1.GKN) 23278

AL-10059 (FAA)

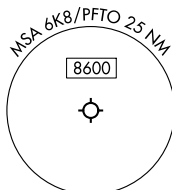
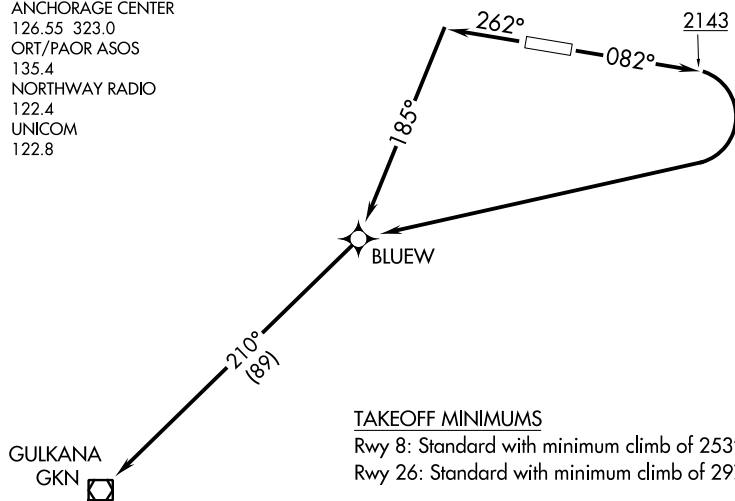
TOK JUNCTION (6K8) (PFTO)

GULKANA ONE DEPARTURE (OBSTACLE) (RNAV)

TOK, ALASKA

ANCHORAGE CENTER
126.55 323.0
ORT/PAOR ASOS
135.4
NORTHWAY RADIO
122.4
UNICOM
122.8

RNAV 1 - GPS.



TAKEOFF MINIMUMS

Rwy 8: Standard with minimum climb of 253'/NM to 8500.

Rwy 26: Standard with minimum climb of 297'/NM to 8500.

TAKEOFF OBSTACLE NOTES

Rwy 8: Building 1' from DER, 384' left of centerline, 11' AGL/1652' MSL. Vertical structure, vehicle on road beginning 14' from DER, 390' left of centerline, up to 17' AGL/1658' MSL. Tree 46' from DER, 321' left of centerline, 28' AGL/1668' MSL. Pole, trees, vegetation, vehicles on road, buildings, vertical structure beginning 48' from DER, 172' left of centerline, up to 41' AGL/1681' MSL. Trees beginning 65' from DER, 316' right of centerline, up to 56' AGL/1699' MSL. Trees beginning 201' from DER, 249' left of centerline, up to 44' AGL/1684' MSL. Trees beginning 487' from DER, 167' right of centerline, up to 56' AGL/1700' MSL. Trees beginning 774' from DER, 4' left of centerline, up to 45' AGL/1686' MSL.

Rwy 26: Buildings beginning 16' from DER, 328' right of centerline, up to 16' AGL/1658' MSL. Vertical structure, vegetation beginning 18' from DER, 193' right of centerline, up to 21' AGL/1663' MSL. Tree, buildings, pole, antenna beginning 29' from DER, 391' right of centerline, up to 61' AGL/1702' MSL. Tree 55' from DER, 504' left of centerline, 60' AGL/1705' MSL. Trees, vehicles on road beginning 58' from DER, 297' left of centerline, up to 62' AGL/1706' MSL. Tree, building beginning 134' from DER, 382' right of centerline, up to 62' AGL/1703' MSL. Trees, buildings, vertical structure, vehicles on road, poles beginning 148' from DER, 68' right of centerline, up to 64' AGL/1705' MSL. Trees beginning 937' from DER, 397' left of centerline, up to 62' AGL/1708' MSL. Trees beginning 1119' from DER, 230' left of centerline, up to 64' AGL/1709' MSL. Trees beginning 1523' from DER, 59' left of centerline, up to 72' AGL/1717' MSL. Trees beginning 2001' from DER, 25' right of centerline, up to 66' AGL/1707' MSL. Trees beginning 2043' from DER, 117' left of centerline, up to 75' AGL/1718' MSL. Trees beginning 2417' from DER, 2' right of centerline, up to 72' AGL/1711' MSL.

NOTE: Chart not to scale.

DEPARTURE ROUTE DESCRIPTION

TAKEOFF RUNWAY 8: Climb on heading 082° to 2143, then right turn direct BLUEW, Thence. . . .

TAKEOFF RUNWAY 26: Climb on heading 262° to intercept course 185° to BLUEW, Thence. . . .

. . . . thence on track 210° to GKN VOR/DME. Maintain ATC assigned altitude. Expect filed altitude 10 minutes after departure.

GULKANA ONE DEPARTURE (OBSTACLE) (RNAV)

(GKN1.GKN) 05OCT23

TOK, ALASKA

TOK JUNCTION (6K8) (PFTO)

AK, 26 DEC 2024 to 20 FEB 2025

AK, 26 DEC 2024 to 20 FEB 2025