

APP CRS Rwy Idg **5500**
 003° TDZE **696**
 Apt Elev **718**

RNAV (GPS) RWY 2

BILL PUGH FLD (M22)

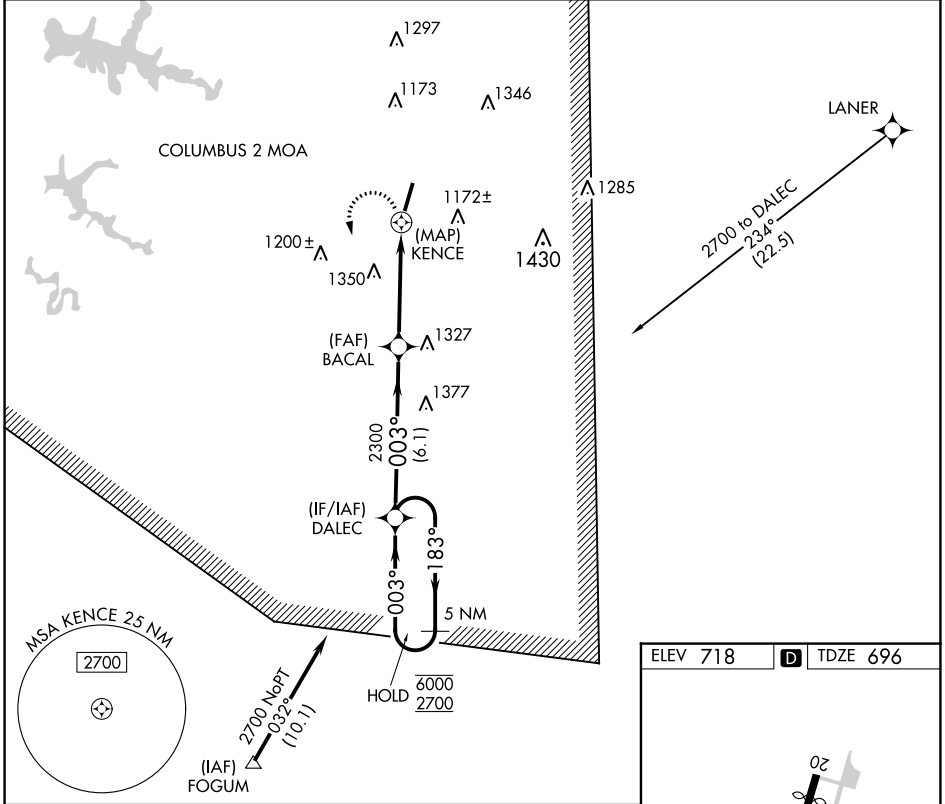
RNP APCH-GPS.

▼ Procedure NA at night. Rwy 2 helicopter visibility reduction below 1 SM NA. Use Muscle Shoals altimeter setting; when not received, use Decatur altimeter setting and increase all MDA 60 feet.

▲ NA

MISSED APPROACH: Climbing left turn to 2700 direct DALEC and hold.

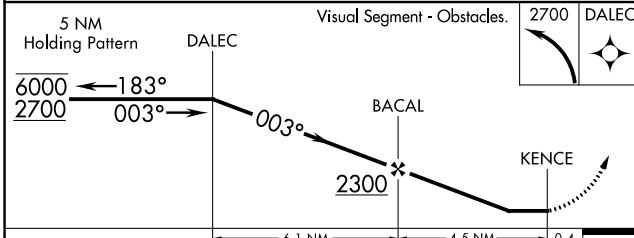
MSL ASOS 119.425	MEMPHIS CENTER 120.8 307.0	UNICOM 122.8 (CTAF) 0
----------------------------	--------------------------------------	---------------------------------



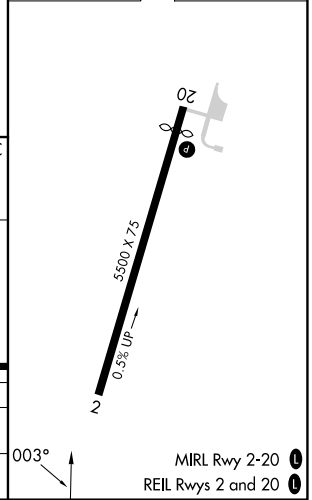
SE-4, 26 DEC 2024 to 23 JAN 2025

SE-4, 26 DEC 2024 to 23 JAN 2025

ELEV 718 **D** TDZE 696



CATEGORY	A	B	C	D
LNVA MDA	1660-1¼ 964 (1000-1¼)	1660-1½ 964 (1000-1½)	1660-3	964 (1000-3)
CIRCLING	1660-1¼ 942 (1000-1¼)	1660-1½ 942 (1000-1½)	1720-3	1002 (1100-3)



MRL Rwy 2-20 **1**
 REL Rws 2 and 20 **1**