

APP CRS	Rwy Idg <b>2298</b>
<b>067°</b>	TDZE <b>41</b>
	Apt Elev <b>41</b>

# RNAV (GPS) RWY 7

FALMOUTH AIRPARK (5B6)

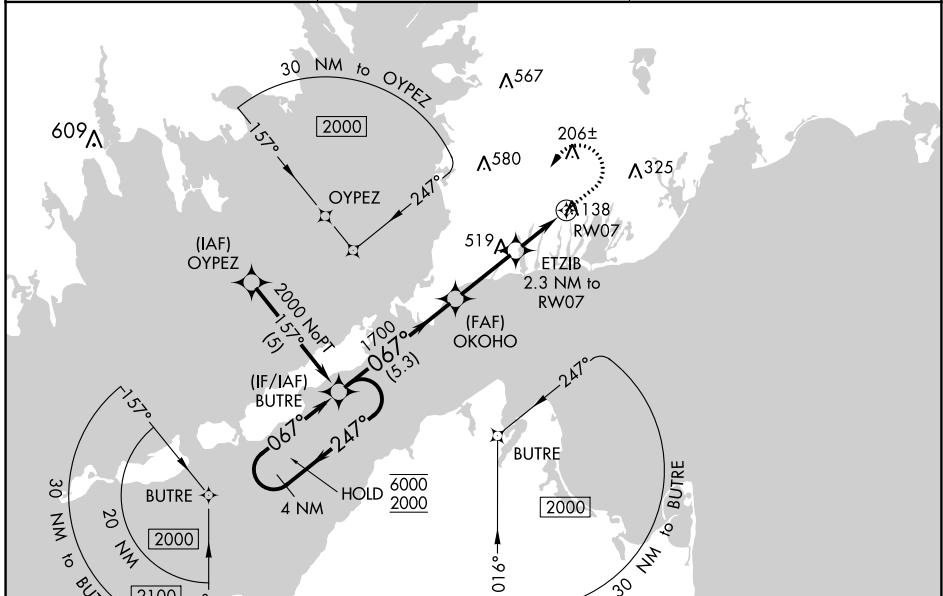
RNP APCH - GPS.

**▼** Rwy 7 helicopter visibility reduction below 1 SM NA. Use Cape Cod Coast Guard Air Station altimeter setting. When not received, procedure NA. Procedure NA at night.

**▲** NA

MISSED APPROACH: Climb to 800 then climbing left turn to 2000 direct BUTRE and hold.

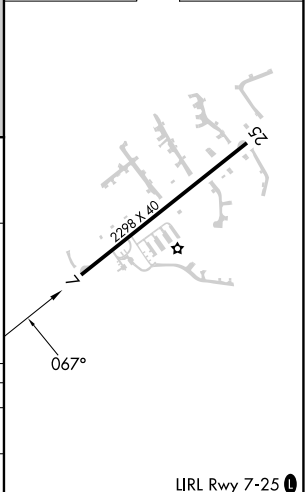
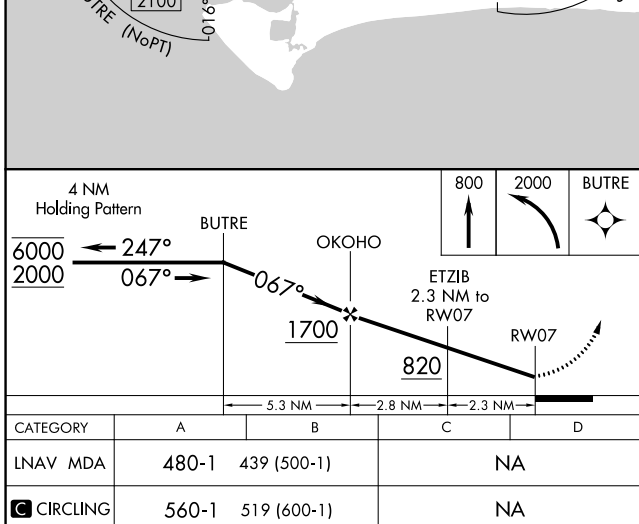
BOSTON APP CON <b>118.2</b>	UNICOM <b>123.075</b> (CTAF)	<b>122.7</b> <b>0</b>
--------------------------------	---------------------------------	-----------------------



NE-1, 26 DEC 2024 to 23 JAN 2025

NE-1, 26 DEC 2024 to 23 JAN 2025

ELEV 41	TDZE 41
---------	---------



CATEGORY	A	B	C	D
LNVA MDA	480-1	439 (500-1)	NA	
<b>C</b> CIRCLING	560-1	519 (600-1)	NA	

IIRL Rwy 7-25 **0**