

RNAV (GPS) Y RWY 32

BETHEL RGNL (ØB1)

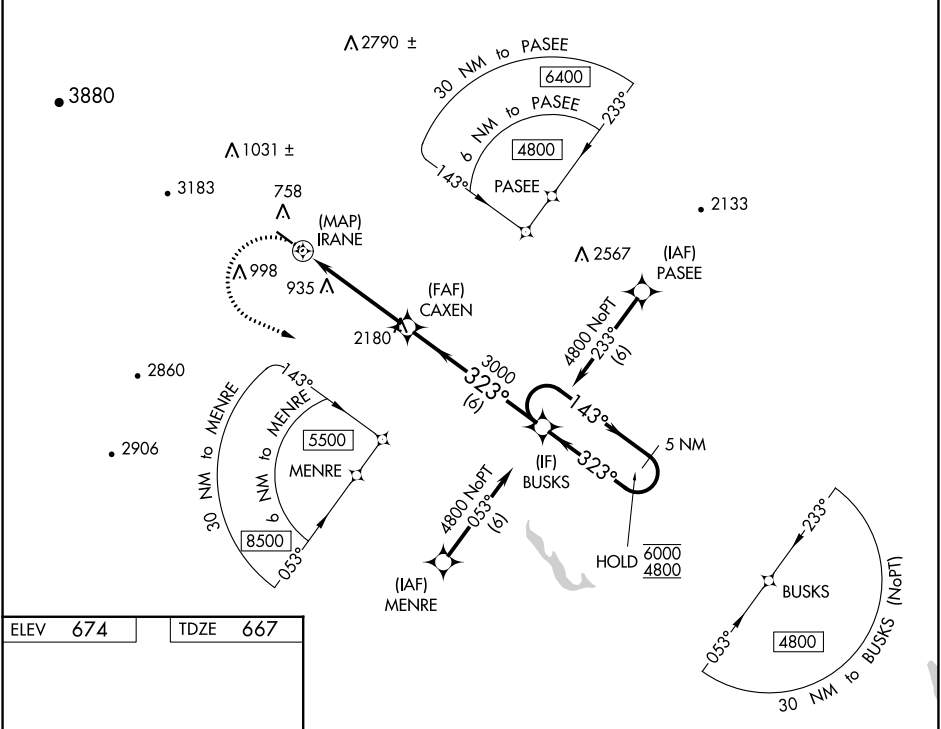
APP CRS	Rwy Idg	3818
323°	TDZE	667
	Apt Elev	674

RNP APCH-GPS.

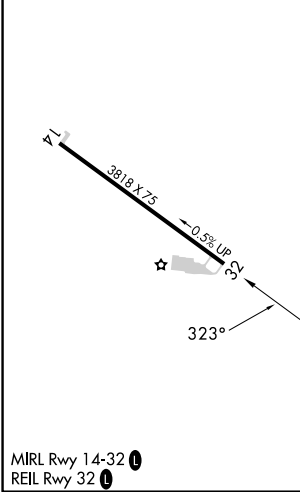
NA Circling Rwy 14 NA at night. Rwy 32 helicopter visibility reduction below 3/4 SM NA. When local altimeter setting not received, use Augusta altimeter setting and increase all MDAs 160 feet. Caution any go-around after passing IRANE, may not provide standard obstacle clearance. VDP NA when using Augusta State altimeter setting.

MISSED APPROACH: Climbing left turn to 4800 direct BUSKS and hold, continue climb-in-hold to 4800.

AWOS-AV	PORTLAND APP CON*	CTAF
119.075	125.5 269.35	122.90



ELEV	674	TDZE	667
------	------------	------	------------



4800	BUSKS	5 NM Holding Pattern		
IRANE	CAXEN	BUSKS		
1.8 NM to IRANE	1.8 NM to CAXEN	1.8 NM to BUSKS		
3000	3000	3000		
143°	143°	143°		
323°	323°	323°		
6000	6000	6000		
4800	4800	4800		
0.5	1.8 NM	2.8 NM		
6 NM				
CATEGORY	A	B	C	D
LNAV MDA	1740-1¼ 1073 (1100-1¼)	1740-1½ 1073 (1100-1½)	NA	
CIRCLING	1740-1¼ 1066 (1100-1¼)	2260-1½ 1586 (1600-1½)	NA	

NE-1, 26 DEC 2024 to 23 JAN 2025