

APP CRS	Rwy Idg	N/A
003°	TDZE	N/A
	Apt Elev	880

RNAV (GPS)-A

SUGARLOAF RGNL (B21)

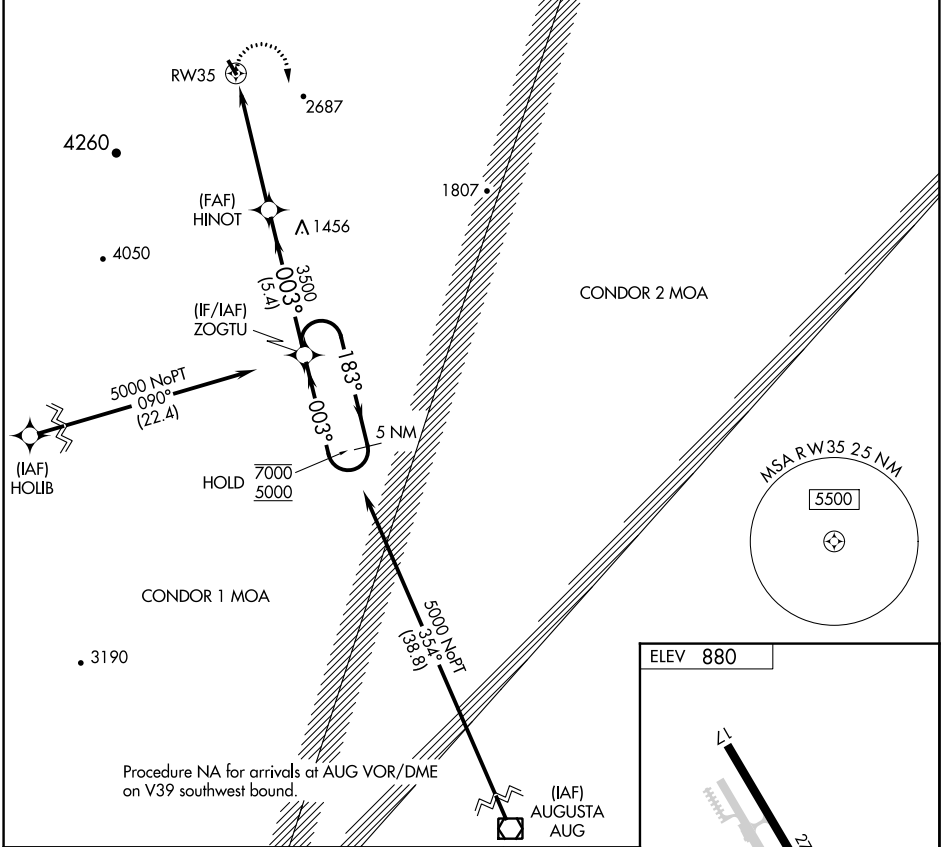
RNP APCH - GPS.

Procedure NA at night. Rwy 17 and 35 helicopter visibility reduction below 1 SM NA.

NA When local altimeter setting not received, use Rangeley altimeter setting.

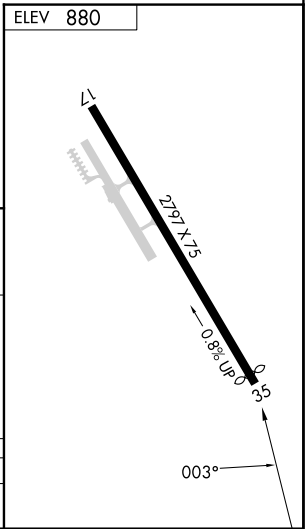
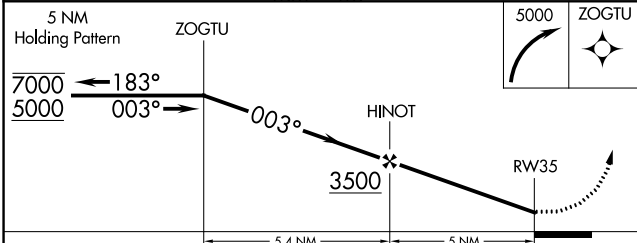
MISSED APPROACH:
Climbing right turn to 5000 direct ZOGTU and hold.

AWOS-AV 120.0	BOSTON CENTER 120.25 346.4	UNICOM 122.8 (CTAF)
-------------------------	--------------------------------------	-------------------------------



NE-1, 26 DEC 2024 to 23 JAN 2025

NE-1, 26 DEC 2024 to 23 JAN 2025



CATEGORY	A	B	C	D
C CIRCLING	3000-1¼ 2120 (2200-1¼)	3000-1½ 2120 (2200-1½)	NA	