

WAAS CH 93727 W02A	APP CRS 016°	Rwy Idg TDZE Apt Elev	4011 1044 1046
----------------------------------------	------------------------	-----------------------------	-------------------------------------------

RNAV (GPS) RWY 2

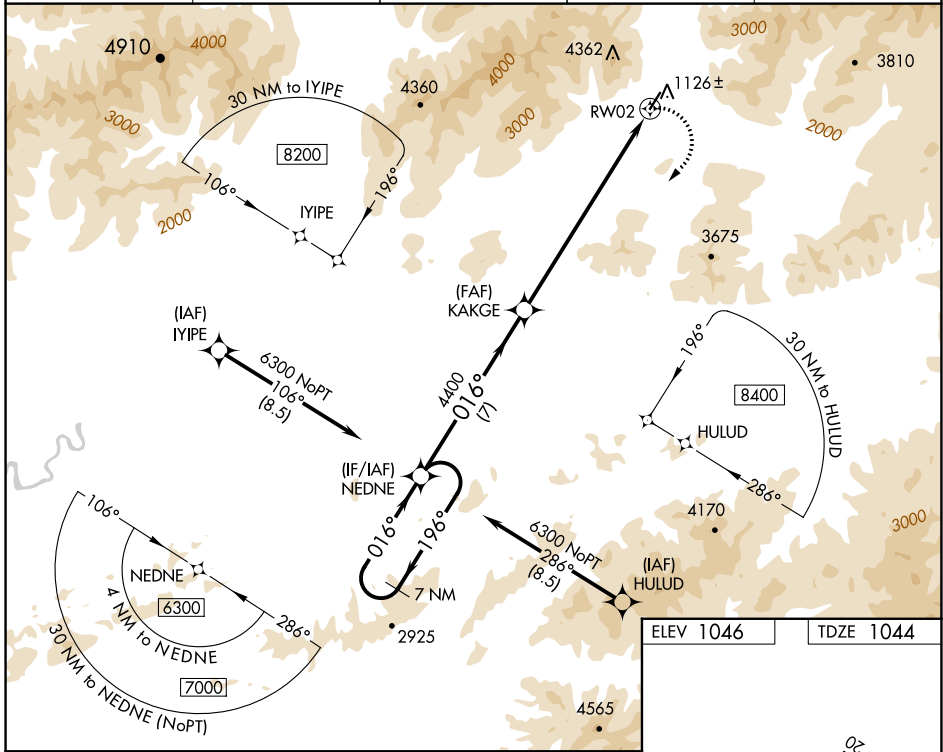
COLDFOOT (CXF) (PACX)

RNP APCH - GPS.

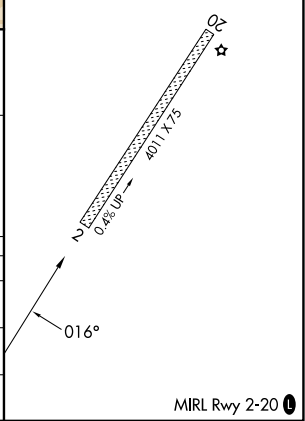
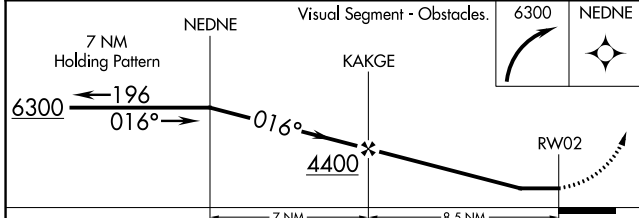
NA Circling NA for Cats B and C west of Rwy 2-20. Rwy 2 helicopter visibility reduction below 3/4 SM NA. When local altimeter setting not received, use BTT/PABT altimeter setting. Circling Rwy 20 NA at night.

MISSED APPROACH: Climbing right turn to 6300 direct NEDNE and hold.

AWOS-3P 118.0	BTT/PABT ASOS 135.45	ANCHORAGE CENTER 124.6 352.0	FAIRBANKS RADIO 122.0	UNICOM 122.9
-------------------------	--------------------------------	----------------------------------------	---------------------------------	------------------------



ELEV 1046	TDZE 1044
-----------	-----------



CATEGORY	A	B	C	D
LP MDA	4160-1¼ 3116 (3200-1¼)	4160-1½ 3116 (3200-1½)	4160-3 3116 (3200-3)	NA
LNAV MDA	4340-1¼ 3296 (3300-1¼)	4340-1½ 3296 (3300-1½)	4340-3 3296 (3300-3)	NA
C CIRCLING	4340-1¼ 3294 (3300-1¼)	4340-1½ 3294 (3300-1½)	4340-3 3294 (3300-3)	NA

AK, 26 DEC 2024 to 20 FEB 2025

AK, 26 DEC 2024 to 20 FEB 2025

MIRL Rwy 2-20