

APP CRS <b>177°</b>	Rwy Idg TDZE Apt Elev <b>1046</b>	N/A N/A <b>1046</b>
------------------------	--	---------------------------

# RNAV (GPS)-A

COLDFOOT (CXF) (PACX)

RNP APCH - GPS.

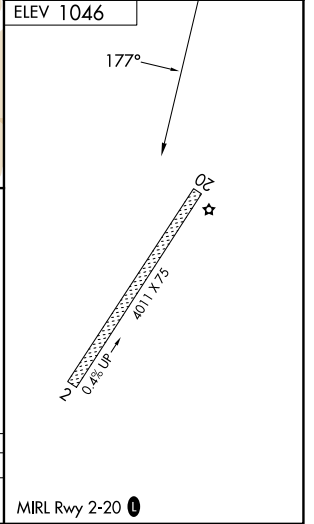
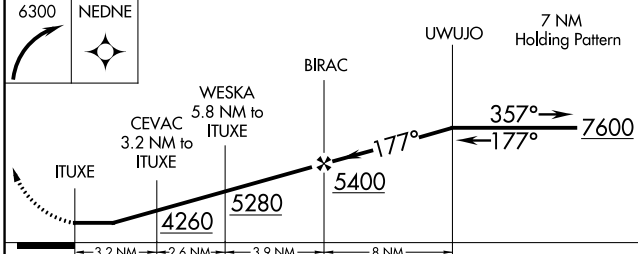
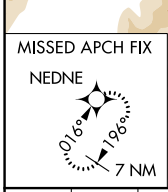
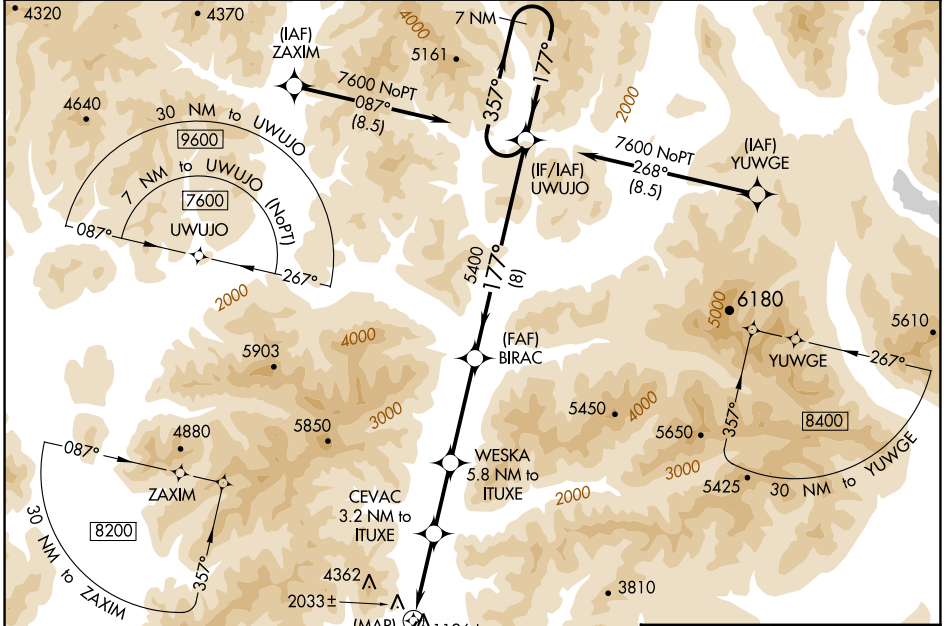
**▽** When local altimeter setting not received, use BTT/PABT altimeter setting.

**▲** NA Rwy 20 helicopter visibility reduction below 1 SM NA. Circling Rwy 20 NA at night. Circling NA for Cats B and C west of Rwy 2-20.

**☼** -18°C

MISSED APPROACH: Climbing right turn to 6300 direct NEDNE and hold.

AWOS-3P <b>118.0</b>	BTT/PABT ASOS <b>135.45</b>	ANCHORAGE CENTER <b>124.6 352.0</b>	FAIRBANKS RADIO <b>122.0</b>	UNICOM <b>122.9</b>
-------------------------	--------------------------------	--	---------------------------------	------------------------



CATEGORY	A	B	C	D
<b>☼</b> CIRCLING	3460-1¼ 2414 (2500-1¼)	3460-1½ 2414 (2500-1½)	4260-3 3214 (3300-3)	NA

AK, 26 DEC 2024 to 20 FEB 2025

AK, 26 DEC 2024 to 20 FEB 2025