

WAAS CH 86744 W36A	APP CRS 001°	Rwy Idg 3381 TDZE 299 Apt Elev 299
----------------------------------------	------------------------	---------------------------------------------------------------

RNAV (GPS) RWY 36

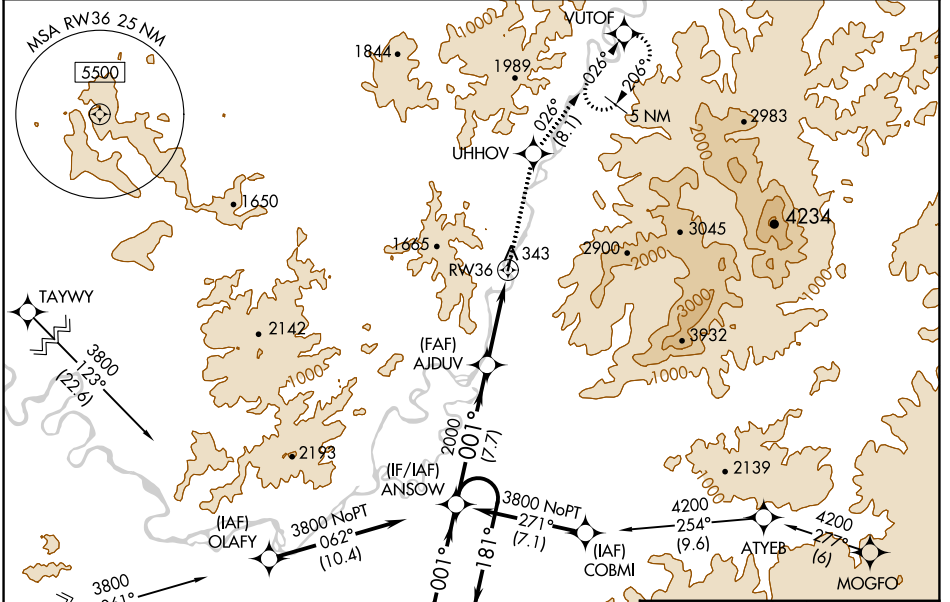
HUGHES (HUS) (PAHU)

RNP APCH-GPS.

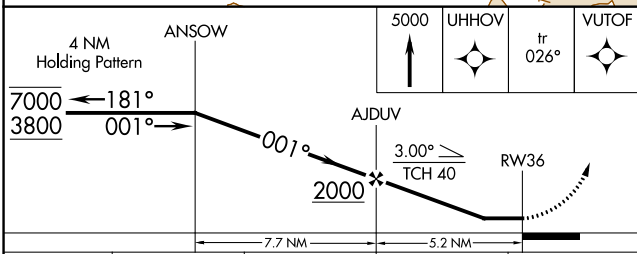
NA Rwy 36 helicopter visibility reduction below 1 SM NA. Procedure NA at night. Circling NA west of Rwy 18-36. Use Indian Mountain LRRS altimeter setting. When Indian Mountain LRRS altimeter setting not received, procedure NA.

MISSED APPROACH: Climb to 5000 direct UHHOV and on track 026° to VUTOF and hold, continue climb-in-hold to 5000.

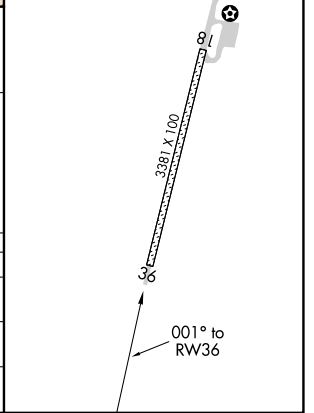
ANCHORAGE CENTER 124.6 352	CTAF 122.9
--------------------------------------	----------------------



Procedure NA for arrivals at TOYKU westbound on V229-V531.



ELEV 299	TDZE 299
MIRL Rwy 18-36	



CATEGORY	A	B	C	D
LNAV MDA	1440-1½ 1141 (1200-1½)	1440-1½ 1141 (1200-1½)	1440-3 1141 (1200-3)	NA
LP MDA	1440-1½ 1141 (1200-1½)	1440-1½ 1141 (1200-1½)	1440-3 1141 (1200-3)	NA
C CIRCLING	1440-1½ 1141 (1200-1½)	1440-1½ 1141 (1200-1½)	1580-3 1281 (1300-3)	NA

AK, 26 DEC 2024 to 20 FEB 2025

AK, 26 DEC 2024 to 20 FEB 2025