

APP CRS	Rwy Idg	3000
122°	TDZE	13
	Apt Elev	18

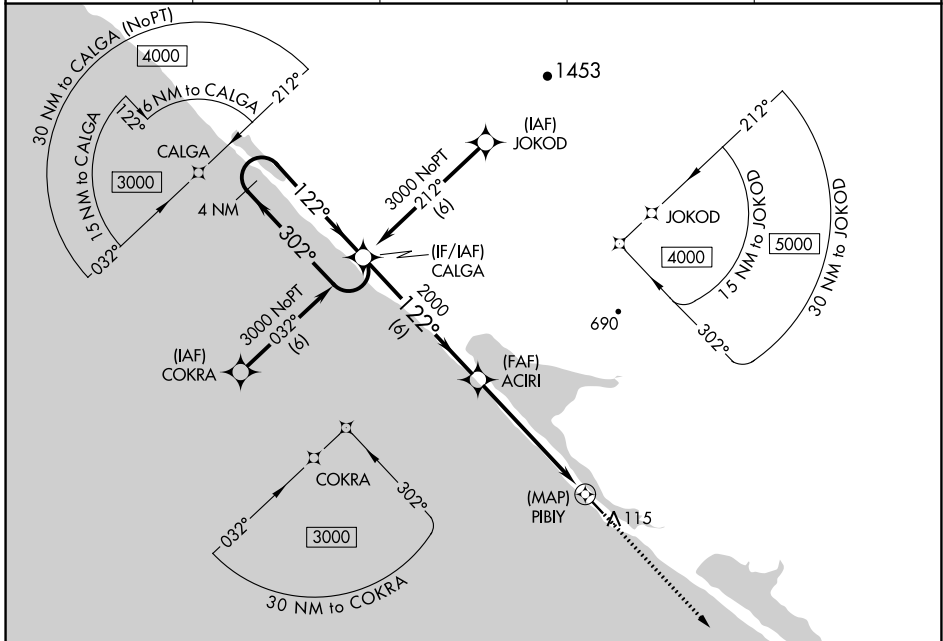
RNAV (GPS) RWY 12

KIVALINA (KVL)(PAVL)

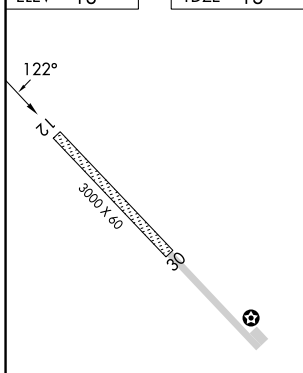
⚠ DME/DME RNP-0.3 NA. When local altimeter setting not received, use Noatak altimeter setting and increase all MDAs 340 feet and LNAV Cat C visibility 1 SM and Circling Cat B visibility ¼ SM, Cat C 1 ¼ SM.

MISSED APPROACH: Climb to 3000 direct DINEC and hold.

ASOS	WTK/PAWN AWOS-3P	ANCHORAGE CENTER	KOTZEBUE RADIO	UNICOM
135.8	135.75	119.2 263.0	122.55	122.8 (CTAF) 0



ELEV	18	TDZE	13
------	----	------	----



4 NM Holding Pattern	CALGA	3000	DINEC
3000	← 302°	→ 122°	122°
	2000	3.06° TCH 40	PIBIY
	6 NM	5.6 NM	0.4

CATEGORY	A	B	C	D
LNAV MDA	340-1 327 (400-1)			NA
CIRCLING	440-1 422 (500-1)	560-1 542 (600-1)	560-1½ 542 (600-1½)	NA

AK, 26 DEC 2024 to 20 FEB 2025

AK, 26 DEC 2024 to 20 FEB 2025