

APP CRS	Rwy Idg	3300
066°	TDZE	115
	Apt Elev	115

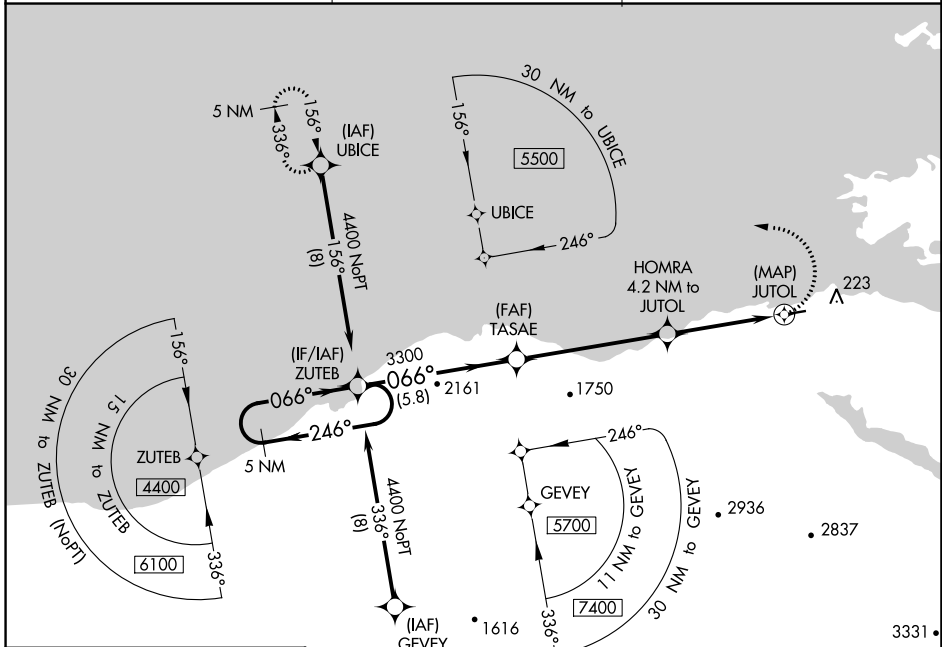
RNAV (GPS) RWY 7

KOKHANOK (9K2) (PFKK)

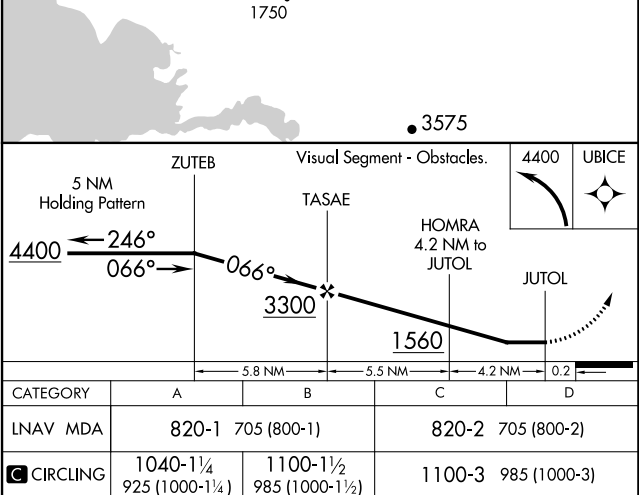
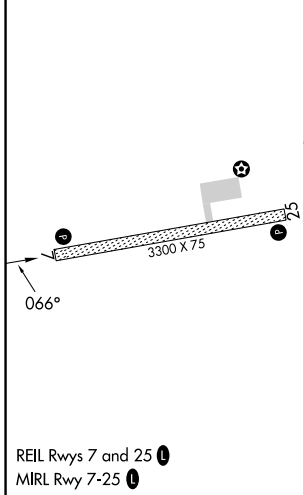
NA Rwy 7 helicopter visibility reduction below 1 SM NA.
DME/DME RNP-0.3 NA. Use Iliamna altimeter setting.
Procedure NA at night.

MISSED APPROACH: Climbing left turn to 4400 direct UBICE and hold, continue climb-in-hold to 4400.

III/PAIL ASOS 134.95	ANCHORAGE CENTER 118.8	CTAF 122.9
--------------------------------	----------------------------------	----------------------



ELEV 115	TDZE 115
----------	----------



AK, 26 DEC 2024 to 20 FEB 2025

AK, 26 DEC 2024 to 20 FEB 2025