

RNAV (GPS) RWY 2

NONDALTON (5NN) (PANO)

APP CRS 020°	Rwy Idg 2800
	TDZE 314
	Apt Elev 314

RNP APCH - GPS.

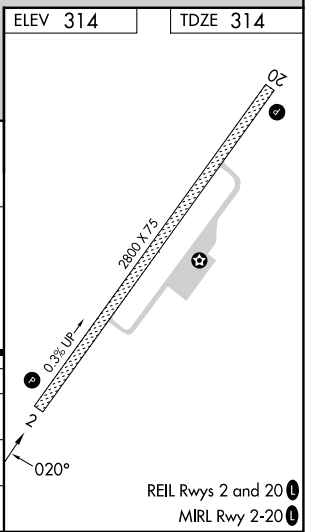
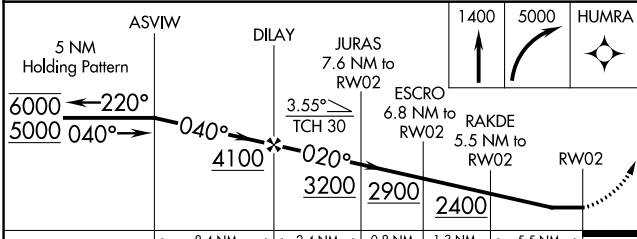
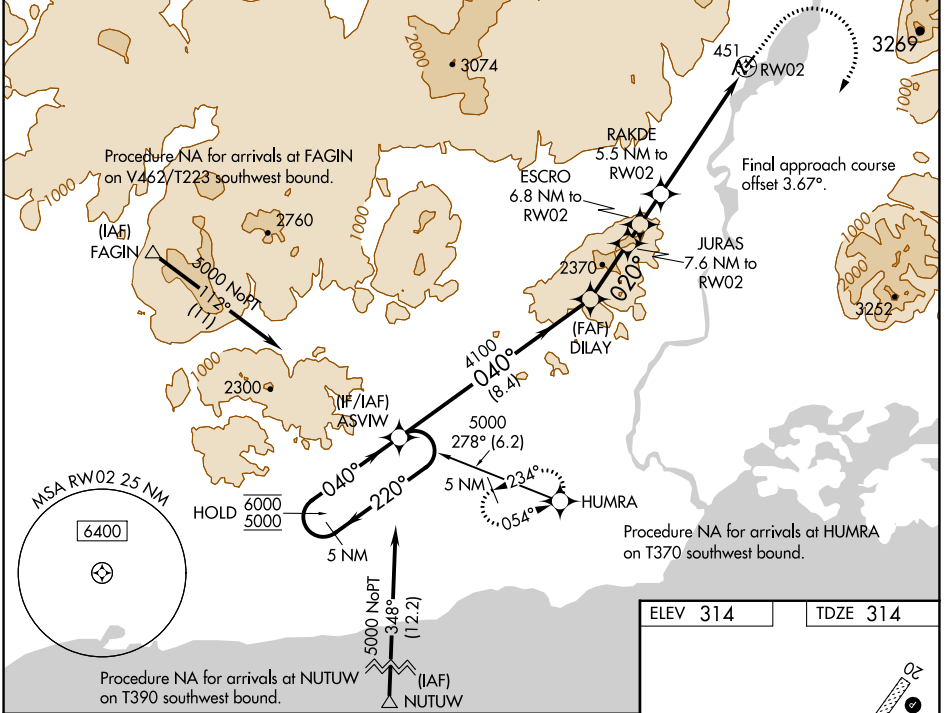
⚠ Rwy 2 helicopter visibility reduction below 1 SM NA.

⚠ -13°C Circling NA west of Rwy 2-20. Straight-In Rwy 2 NA at night, Circling Rwy 2 NA at night. Use Iliamna altimeter setting: when not received, procedure NA.

MISSED APPROACH: Climb to 1400 then climbing right turn to 5000 direct HUMRA and hold, continue climb-in-hold to 5000.

*Missed approach requires minimum climb of 216 feet per NM to 3100.

III/PAIL ASOS 134.95	ANCHORAGE CENTER 118.8	KENAI RADIO 122.2	CTAF 122.9
--------------------------------	----------------------------------	-----------------------------	----------------------



CATEGORY	A	B	C	D
LNAV MDA*	1380-1¼ 1066 (1100-1¼)	1380-1½ 1066 (1100-1½)		NA
LNAV MDA	1660-1¼ 1346 (1400-1¼)	1660-1½ 1346 (1400-1½)		NA
C CIRCLING	1660-1¼ 1346 (1400-1¼)	1660-1½ 1346 (1400-1½)		NA

AK, 26 DEC 2024 to 20 FEB 2025

AK, 26 DEC 2024 to 20 FEB 2025