

APP CRS	Rwy Idg	3281
137°	TDZE	371
	Apt Elev	371

RNAV (GPS) RWY 14

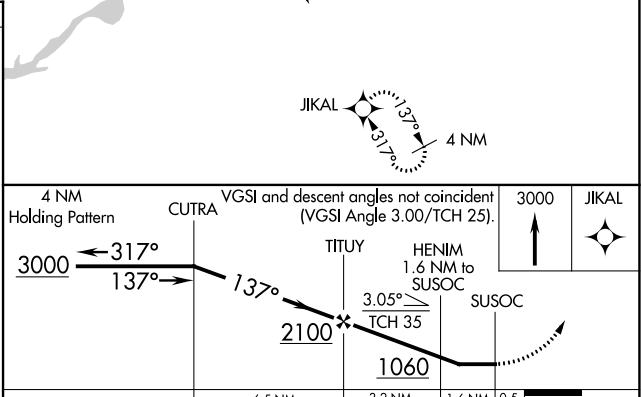
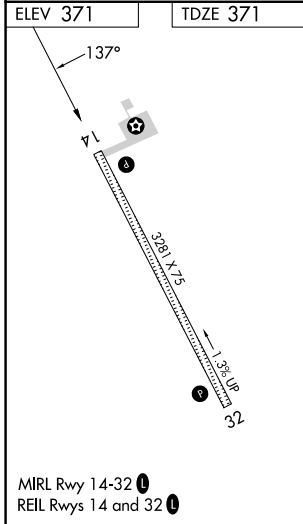
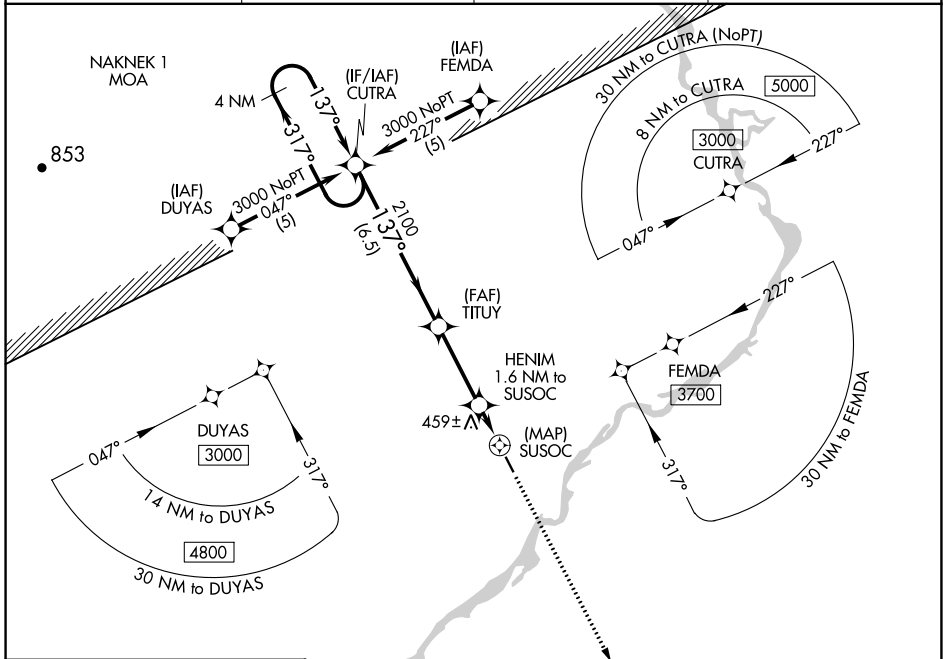
NEW STUYAHOK (KNW) (PANW)

RNP APCH - GPS.

When local altimeter setting not received, use JZZ/PAJZ altimeter setting and increase all MDAs 60 feet. Procedure NA at night. Visibility reduction by helicopters NA.

MISSED APPROACH: Climb to 3000 direct JIKAL and hold.

AWOS-3P 120.275	ANCHORAGE CENTER 132.75 282.35	DILLINGHAM RADIO 122.55	CTAF 122.9
---------------------------	--	-----------------------------------	----------------------



CATEGORY	A	B	C	D
LNAV MDA	780-1	409 (500-1)	NA	
CIRCLING	780-1	840-1	NA	
	409 (500-1)	469 (500-1)		

AK, 26 DEC 2024 to 20 FEB 2025

AK, 26 DEC 2024 to 20 FEB 2025