

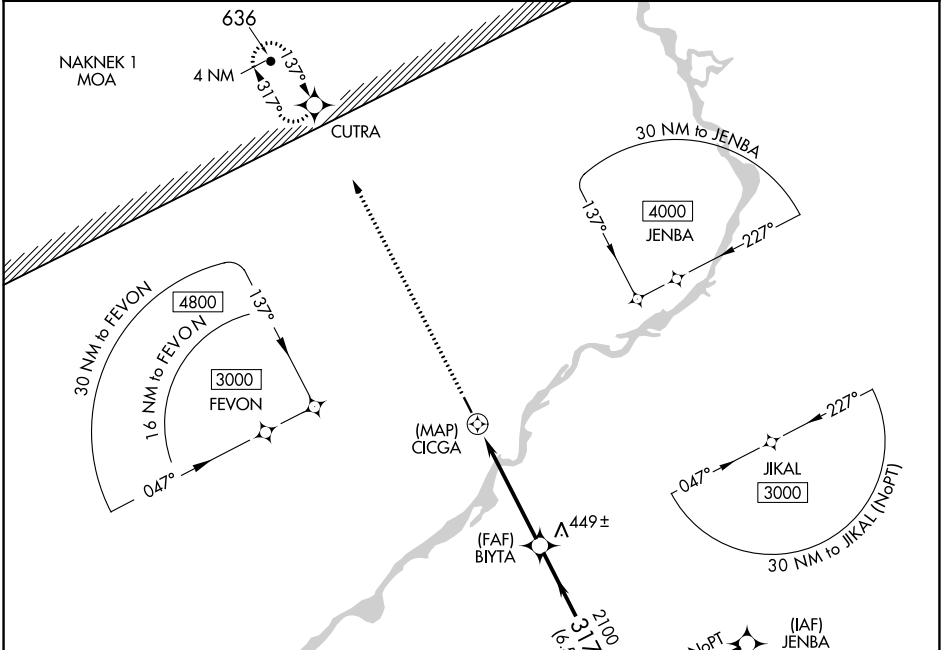
APP CRS	Rwy Idg	3281
317°	TDZE	368
	Apt Elev	371

RNAV (GPS) RWY 32

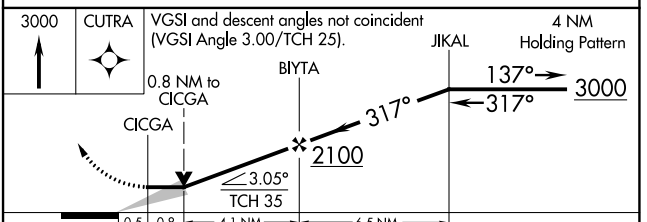
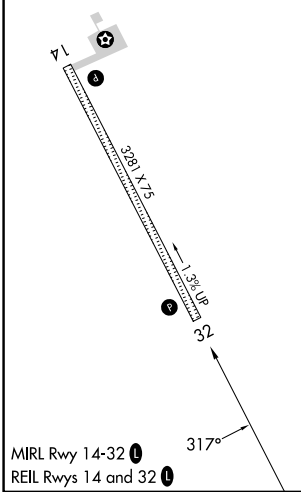
NEW STUYAHOK (KNW) (PANW)

RNP APCH - GPS.	MISSED APPROACH: Climb to 3000 direct CUTRA and hold.
<p>▼ When local altimeter setting not received, use JZZ/PAJZ altimeter setting and increase all MDAs 60 feet. Procedure NA at night.</p>	

AWOS-3P 120.275	ANCHORAGE CENTER 132.75 282.35	DILLINGHAM RADIO 122.55	CTAF 122.9
---------------------------	--	-----------------------------------	----------------------



ELEV 371	TDZE 368
----------	----------



CATEGORY	A	B	C	D
LNAV MDA	760-1	392 (400-1)	NA	
CIRCLING	780-1 409 (500-1)	840-1 469 (500-1)	NA	

AK, 26 DEC 2024 to 20 FEB 2025

AK, 26 DEC 2024 to 20 FEB 2025