

APP CRS	Rwy Idg	<b>4466</b>
<b>105°</b>	TDZE	<b>380</b>
	Apt Elev	<b>393</b>

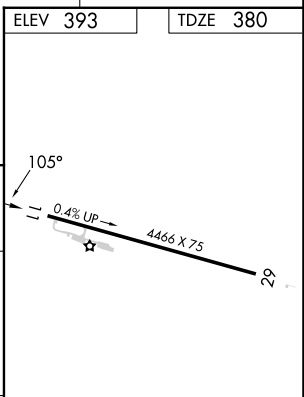
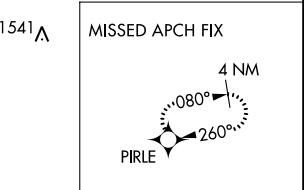
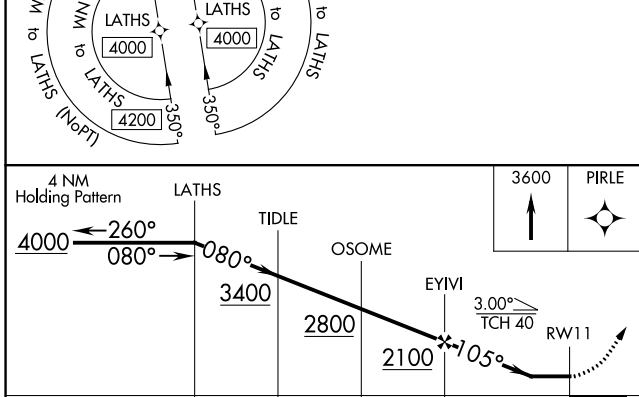
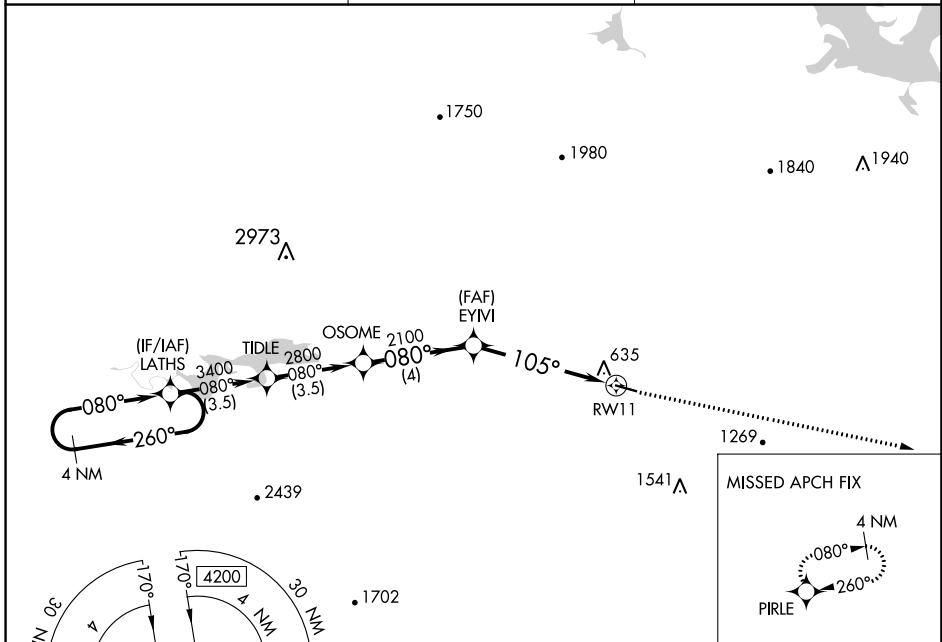
# RNAV (GPS) RWY 11

DANVILLE MUNI (32A)

**NA** Circling NA for Cat D south of Rwy 11-29. DME/DME RNP-0.3 NA.  
 Procedure NA at night. Helicopter visibility reduction below 1 SM NA.  
 Use Russellville Rgnl altimeter setting, when not received procedure NA.

**MISSED APPROACH:**  
 Climb to 3600 direct PIRLE and hold.

RUE ASOS <b>132.475</b>	MEMPHIS CENTER <b>128.475 377.15</b>	CTAF <b>122.90</b>
----------------------------	---	-----------------------



CATEGORY	A	B	C	D
LNAV MDA	940-1	560 (600-1)	940-1 $\frac{5}{8}$	560 (600-1 $\frac{5}{8}$ )
<b>C</b> CIRCLING	1040-1 647 (700-1)	1060-1 667 (700-1)	1060-1 $\frac{3}{4}$ 667 (700-1 $\frac{3}{4}$ )	1480-3 1087 (1100-3)

MIRL Rwy 11-29 **0**

SC-1, 26 DEC 2024 to 23 JAN 2025

SC-1, 26 DEC 2024 to 23 JAN 2025