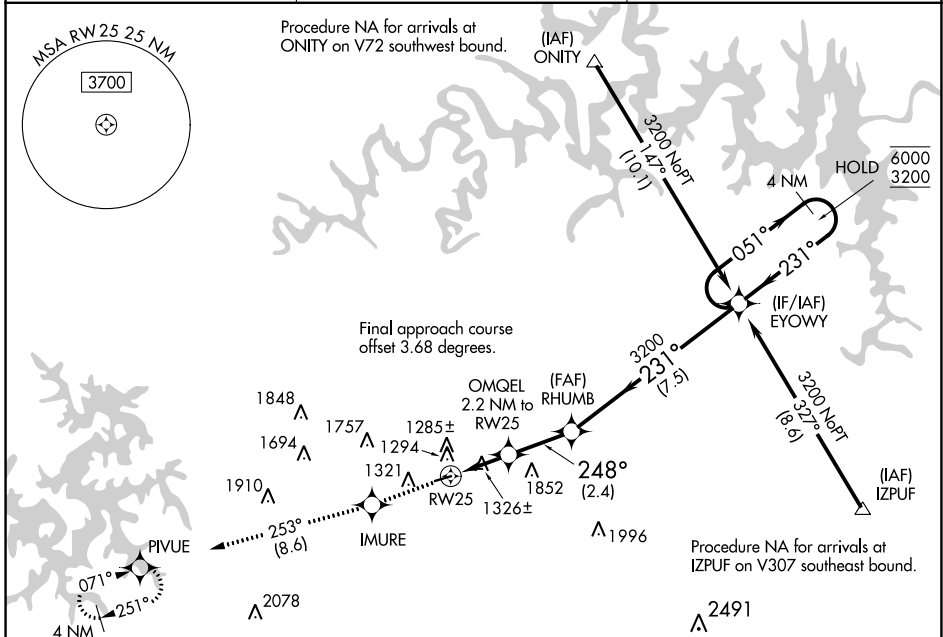


WAAS CH 86442	APP CRS 248°	Rwy Idg TDZE 1206	3555
W25A		Apt Elev 1206	

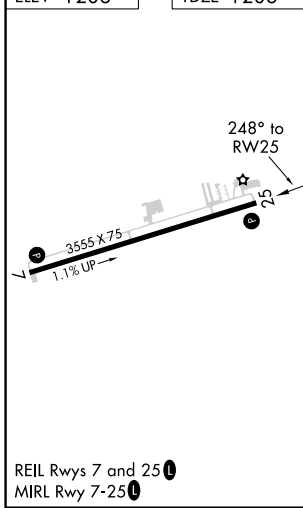
RNAV (GPS) RWY 25

CARROLL COUNTY (4M1)

RNP APCH-GPS.		MISSED APPROACH: Climb to 3300 direct IMURE and on track 253° to PIVUE and hold.
<p>▼ Rwy 25 helicopter visibility reduction below 3/4 SM NA. Use Branson altimeter setting; when not received, use Rogers altimeter setting and increase all MDA 20 feet. Circling Rwy 7 NA at night.</p> <p>▲ NA</p>	<p>BBG AWOS-3 124.625</p>	<p>RAZORBACK APPROACH* 126.6 305.2</p>
		CTAF 122.90



ELEV 1206	TDZE 1206
-----------	-----------



CATEGORY	A	B	C	D
LP MDA	1660-1	454 (500-1)		NA
LNAV MDA	1660-1	454 (500-1)		NA
C CIRCLING	1700-1 494 (500-1)	1980-1 774 (800-1)		NA

SC-1, 26 DEC 2024 to 23 JAN 2025

SC-1, 26 DEC 2024 to 23 JAN 2025