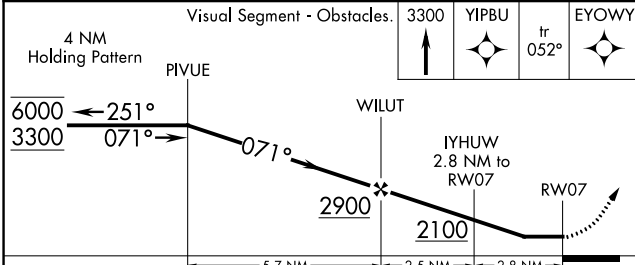
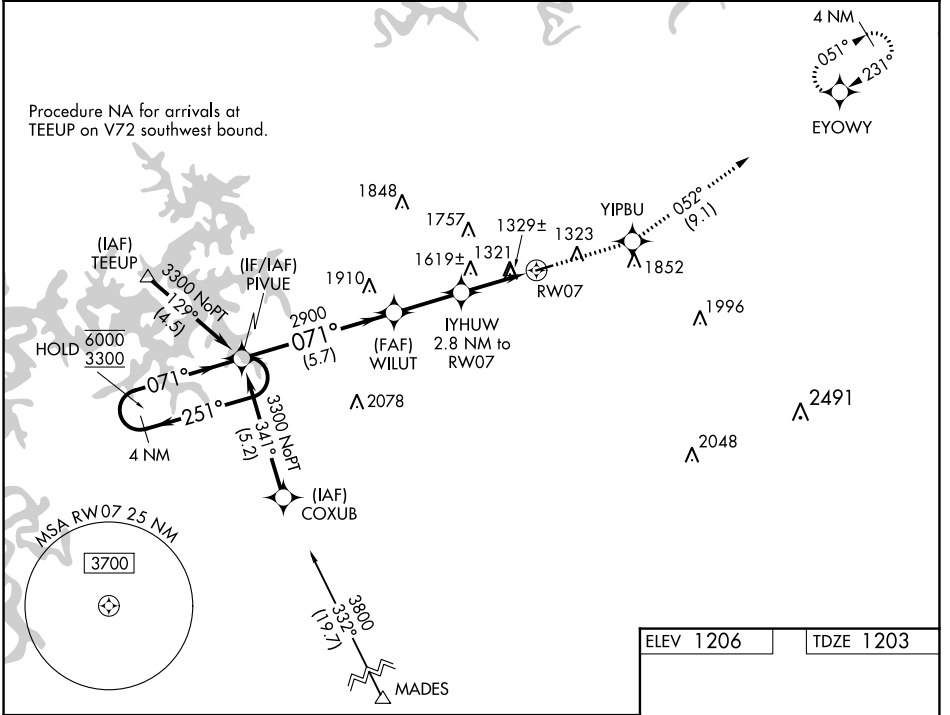


WAAS CH 40242	APP CRS 071°	Rwy ldg TDZE 1203	3555
W07A		Apt Elev 1206	

RNAV (GPS) RWY 7

CARROLL COUNTY (4M1)

RNP APCH-GPS.		MISSED APPROACH: Climb to 3300 direct YIPBU and on track 052° to EYOWY and hold.
<p>▼ Rwy 7 helicopter visibility reduction below 1 SM NA. Use Branson altimeter setting; when not received, use Rogers altimeter setting and increase all MDA 20 feet. Rwy 7 Straight-in and Circling minimums NA at night.</p>		
BGG AWOS-3 124.625	RAZORBACK APPROACH ★ 126.6 305.2	CTAF 122.9



ELEV 1206	TDZE 1203
-----------	-----------

3555x75
1.1% UP

071° to RW07

REIL Rwy 7 and 25
MIRL Rwy 7-25

CATEGORY	A	B	C	D
LP MDA	1760-1	557 (600-1)		NA
LNAV MDA	1940-1	737 (800-1)		NA
C CIRCLING	1940-1 734 (800-1)	1980-1 774 (800-1)		NA

SC-1, 26 DEC 2024 to 23 JAN 2025

SC-1, 26 DEC 2024 to 23 JAN 2025