

WAAS CH 56325 W21A	APP CRS 199°	Rwy Idg TDZE Apt Elev	3892 2026 2031
--	------------------------	-----------------------------	---

RNAV (GPS) RWY 21

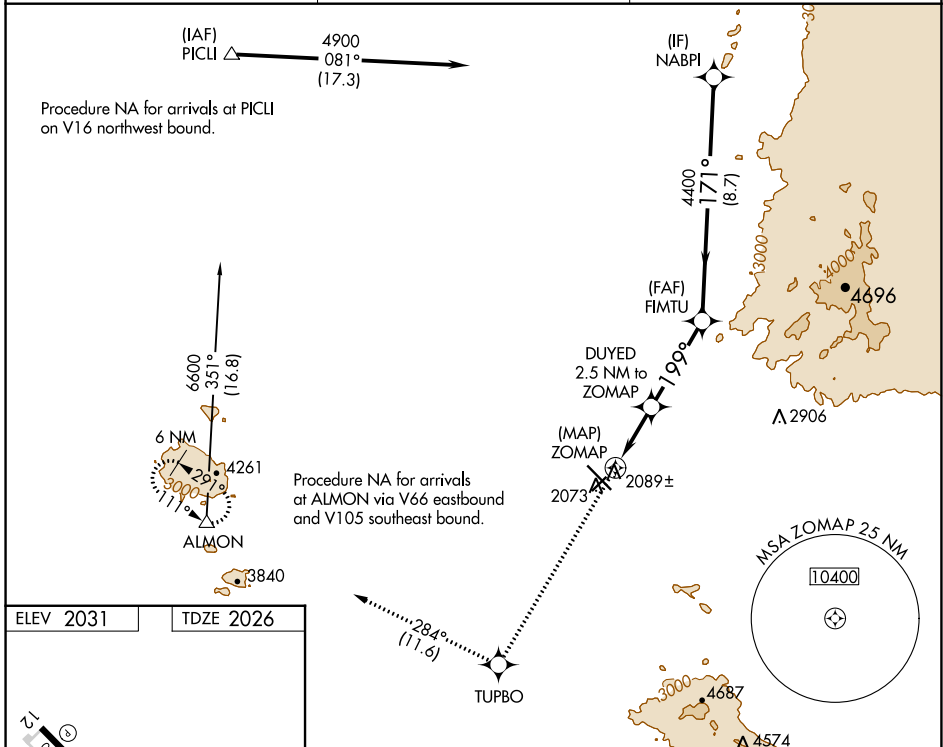
MARANA RGNL (AVQ)

RNP APCH.

⚠ NA Rwy 21 helicopter visibility reduction below 1 SM NA. When local altimeter setting not received, use Ryan Fld altimeter setting and increase all MDAs 100 feet, increase LP Cat C visibility $\frac{1}{8}$ SM and increase LNAV Cat C visibility $\frac{1}{4}$ SM.

MISSED APPROACH: Climb to 6700 direct TUPBO and on track 284° to ALMON and hold, continue climb-in-hold 6700.

AWOS-3 118.375	TUCSON APP CON 119.4 318.1	UNICOM 123.0 (CTAF) 0
--------------------------	--------------------------------------	---------------------------------



ELEV 2031	TDZE 2026
REIL Rwy 3 and 21 REIL Rwy 12 and 30 0 MIRL Rwy 3-21 and 12-30 0	

6700	TUPBO	tr 284°	ALMON	VGSI and descent angles not coincident (VGSI Angle 2.91/TCH 41).
			FIMTU	NABPI
		ZOMAP	DUYED 2.5 NM to ZOMAP $\leq 3.35^\circ$ TCH 40	4900
			3120	4400
			0.5	2.5 NM
			3.6 NM	8.7 NM
CATEGORY	A	B	C	D
LP MDA	2340-1 314 (400-1)			NA
LNAV MDA	2640-1	614 (700-1)	2640-1 $\frac{3}{4}$ 614 (700-1 $\frac{3}{4}$)	NA

SW-4, 26 DEC 2024 to 23 JAN 2025

SW-4, 26 DEC 2024 to 23 JAN 2025