

WAAS CH 77901 W14A	APP CRS 138°	Rwy Idg TDZE 75 Apt Elev 75
--	------------------------	---

RNAV (GPS) RWY 14

SOUTH TEXAS INTL AT EDINBURG (E.BG)

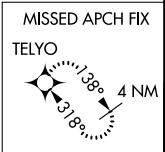
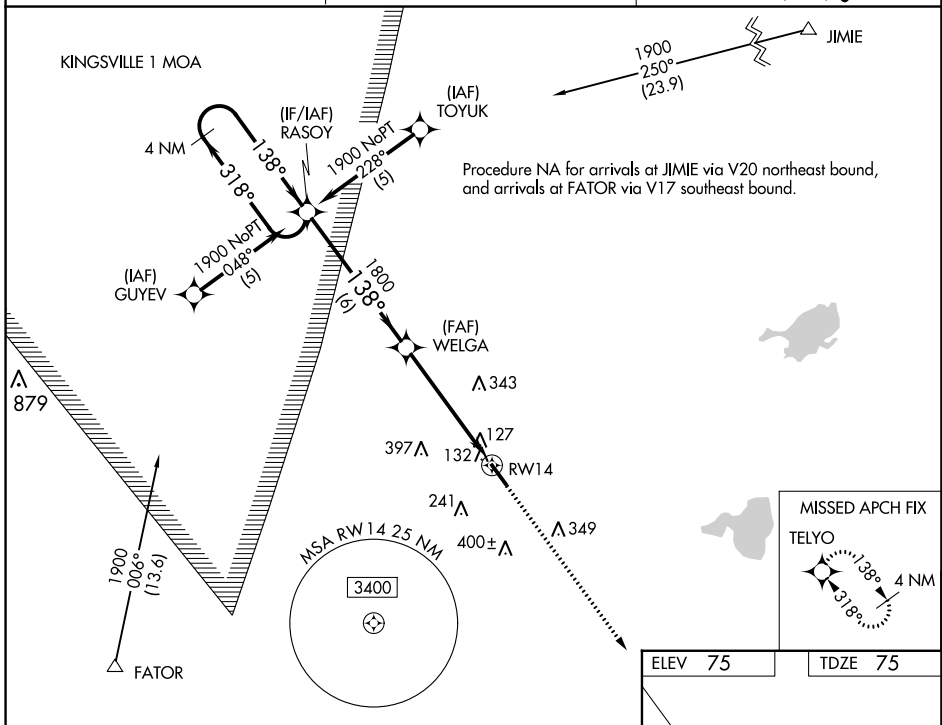
RNP APCH.
 Rwy 14 helicopter visibility reduction below 3/4 SM NA.
 For uncompensated Baro-VNAV systems, LNAV/VNAV NA below -1.5°C (5°F) or above 48°C (120°F).

MISSED APPROACH: Climb to 1900 direct TELYO and hold.

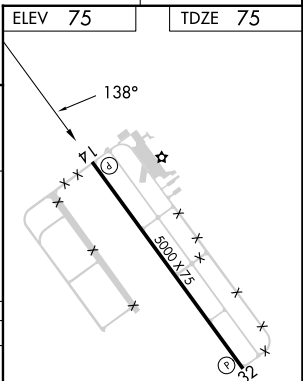
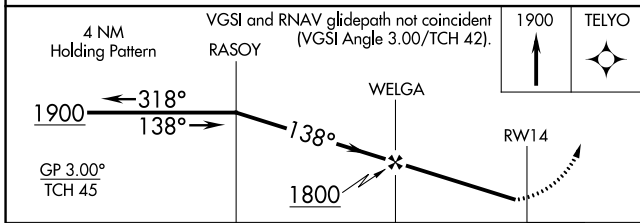
AWOS-3PT
118.025

VALLEY APP CON
126.55 377.2

UNICOM
122.8 (CTAF)



ELEV 75	TDZE 75
---------	---------



CATEGORY	A	B	C	D
LPV DA		325-1	250 (300-1)	
LNAV/VNAV DA		441-1¼	366 (400-1¼)	
LNAV MDA		440-1	365 (400-1)	440-1¼ 365 (400-1¼)
CIRCLING	500-1¼ 425 (500-1¼)	620-1¼ 545 (600-1¼)	760-2 685 (700-2)	760-2¼ 685 (700-2¼)

MIRL Rwy 14-32
 REIL Rwy 14

SC-3, 26 DEC 2024 to 23 JAN 2025

SC-3, 26 DEC 2024 to 23 JAN 2025