

APP CRS	Rwy Idg	3934
056°	TDZE	365
	Apt Elev	365

RNAV (GPS) RWY 5

BEAVER (WBQ)(PAWB)

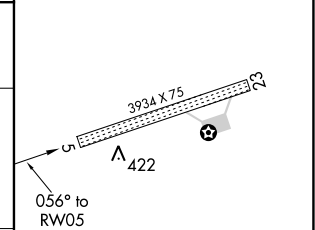
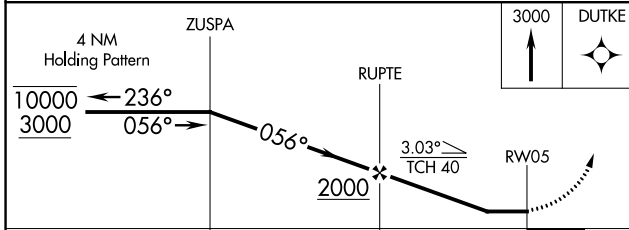
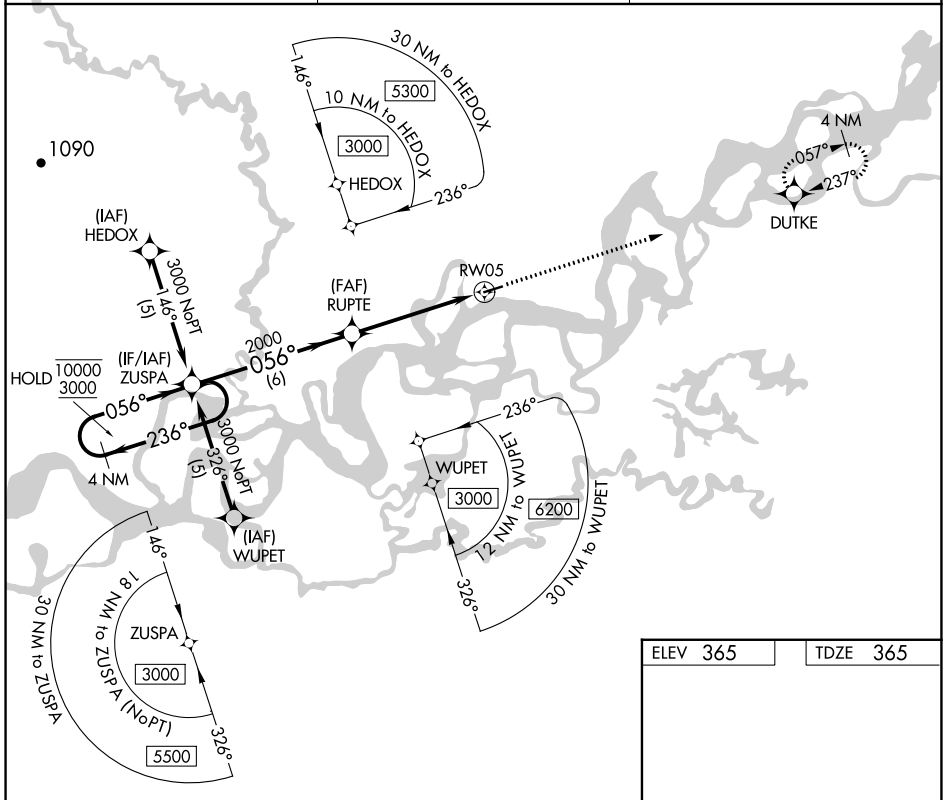
RNP APCH-GPS.
 Rwy 5 helicopter visibility reduction below 3/4 SM NA.
 Use Fort Yukon altimeter setting.

MISSED APPROACH: Climb to 3000 direct DUTKE and hold.

FYU/PFYU AWOS-3P
125.8

FAIRBANKS RADIO
122.05 122.15

CTAF
122.9 0



ELEV 365	TDZE 365
MIRL Rwy 5-23 0	

CATEGORY	A	B	C	D
LNVA MDA	940-1 575 (600-1)		940-1 3/8 575 (600-1 3/8)	NA
CIRCLING	940-1 575 (600-1)		940-1 1/2 575 (600-1 1/2)	NA

AK, 26 DEC 2024 to 20 FEB 2025

AK, 26 DEC 2024 to 20 FEB 2025