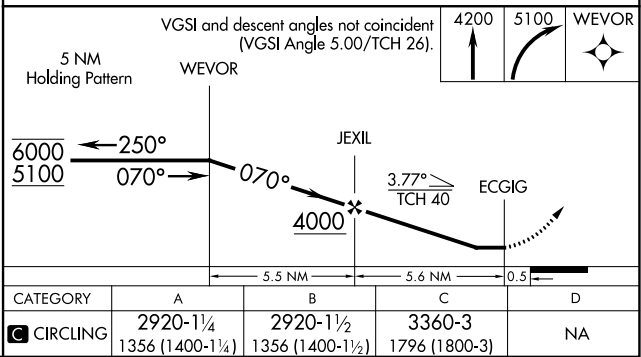
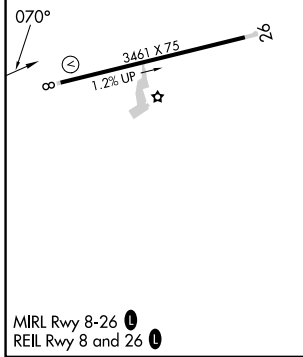
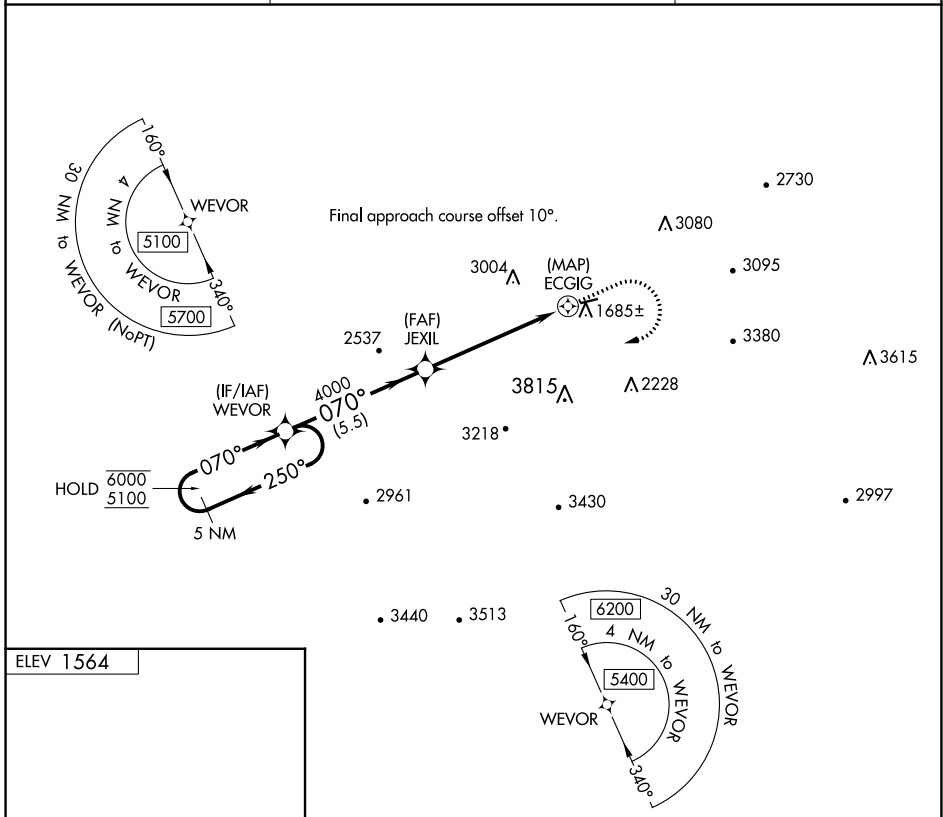


APP CRS 070°	Rwy Idg TDZE Apt Elev	N/A N/A 1564
------------------------	-----------------------------	---

RNAV (GPS)-A

TUCKER-GUTHRIE MEML (I35)

RNP APCH.		MISSED APPROACH: Climb to 4200 then climbing right turn to 5100 direct WEVOR and hold.
▼ Circling NA north of Rwy 8-26. Procedure NA at night.	▲ Rwy 8 helicopter visibility reduction below 1 SM NA.	
AWOS-3 118.35	INDIANAPOLIS CENTER 124.625 371.925	UNICOM 122.8 (CTAF) 0



SE-1, 26 DEC 2024 to 23 JAN 2025

SE-1, 26 DEC 2024 to 23 JAN 2025