

WAAS CH <b>42840</b> W31A	APP CRS <b>314°</b>	Rwy Idg TDZE Apt Elev	<b>3019</b> <b>669</b> <b>674</b>
---------------------------------	------------------------	-----------------------------	---

# RNAV (GPS) RWY 31

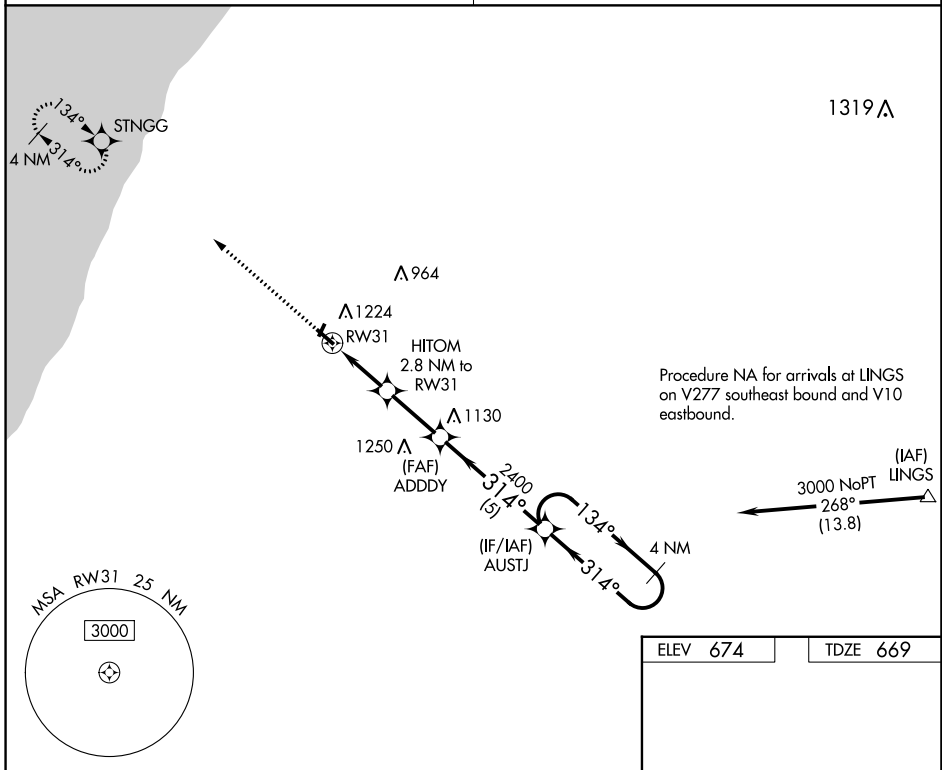
ANDREWS UNIVERSITY AIRPARK (C20)

**⚠** Rwy 31 helicopter visibility reduction below 1 SM NA. DME/DME RNP-0.3 NA. Procedure NA at night. Use Benton Harbor altimeter setting; when not received, use South Bend Intl altimeter setting and increase all MDA 40 feet. Increase LP and LNAV Cats C/D visibility 1/8 SM and Circling Cats B/C 1/4 SM.

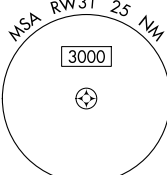
**MISSED APPROACH:**  
Climb to 3000 direct STNGG and hold.

SOUTH BEND APP CON ★  
**118.55 257.8**

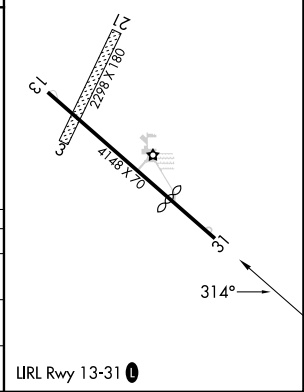
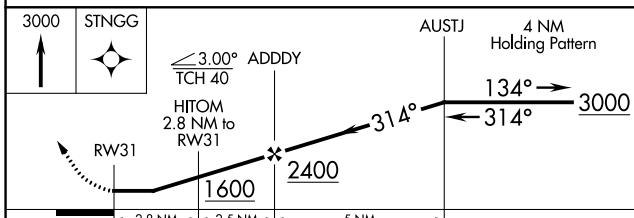
UNICOM  
**122.7 (CTAF) 0**



Procedure NA for arrivals at LINGS on V277 southeast bound and V10 eastbound.



ELEV 674	TDZE 669
----------	----------



CATEGORY	A	B	C	D
LP MDA	1100-1 431 (500-1)		1100-1¼ 431 (500-1¼)	
LNAV MDA	1160-1 491 (500-1)		1160-1⅜ 491 (500-1⅜)	
<b>C</b> CIRCLING	1620-1¼ 946 (1000-1¼)		1620-2¾ 946 (1000-2¾)	1620-3 946 (1000-3)

IIRL Rwy 13-31 0

EC-1, 26 DEC 2024 to 23 JAN 2025

EC-1, 26 DEC 2024 to 23 JAN 2025