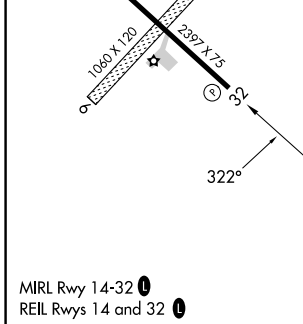
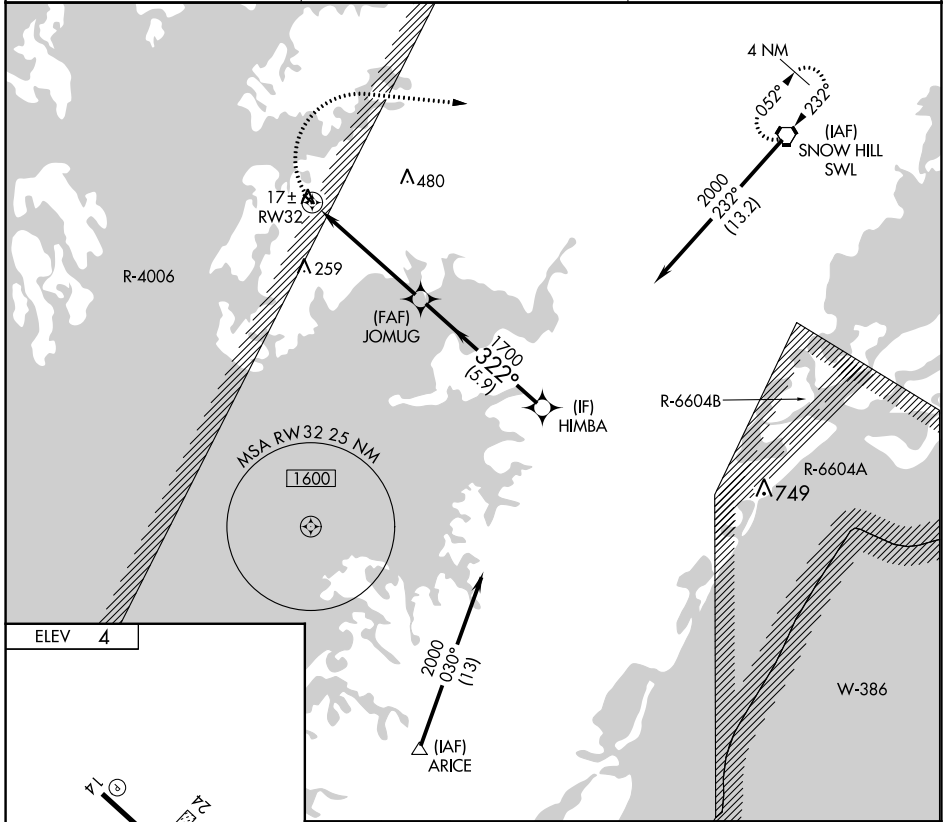


APP CRS 322°	Rwy Idg TDZE Apt Elev	N/A N/A 4
------------------------	-----------------------------	--------------------------------------

RNAV (GPS)-B
CRISFIELD-SOMERSET COUNTY (W41)

RNP APCH. ▼ Circling NA to Rwys 6 and 24. ▲ NA Procedure NA at night. Use Wallops Island altimeter setting.		MISSED APPROACH: Climbing right turn to 2000 direct SWL VORTAC and hold.
WAL ASOS 119.175	PATUXENT APP CON ★ 127.95 314.0	UNICOM 122.8 (CTAF) 0



2000 SWL	Visual Segment - Obstacles.			
RW32		JOMUG	HIMBA	
5.2 NM		5.9 NM	2000	
1700		322°		
CATEGORY	A	B	C	D
C CIRCLING	520-1	516 (600-1)	NA	

NE-3, 26 DEC 2024 to 23 JAN 2025

NE-3, 26 DEC 2024 to 23 JAN 2025