

WAAS CH 45610 W 16A	APP CRS 165°	Rwy Idg 3400 TDZE 79 Apt Elev 79
---	------------------------	---

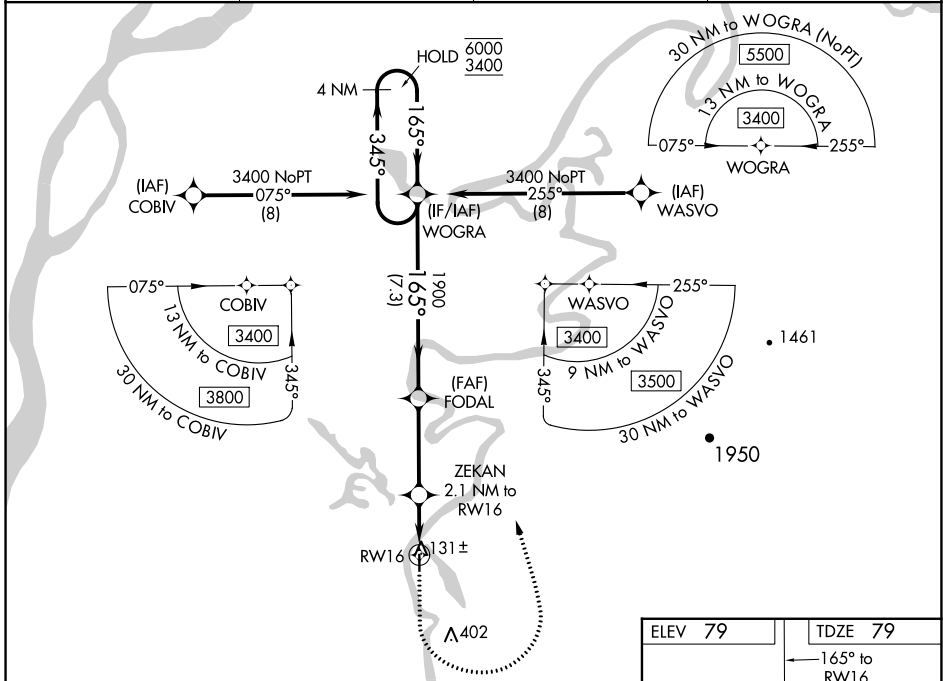
RNAV (GPS) RWY 16

SHAGELUK (SHX) (PAHX)

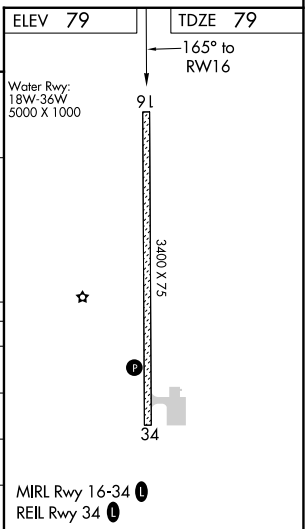
RNP APCH.
 ▼ For uncompensated Baro-VNAV systems, LNAV/VNAV NA below -25°C or above 54°C.
 ▲ Circling NA for Cats C and D east of Rwy 16-34.

MISSED APPROACH: Climb to 1000 then climbing left turn to 3400 direct WOGRA and hold.

AWOS-3P 121.575	ANCHORAGE CENTER 135.7 335.5	KENAI RADIO 122.4	UNICOM 122.8 (CTAF)
---------------------------	--	-----------------------------	-------------------------------



4 NM Holding Pattern		WOGRA		FODAL		ZEKAN		RWY 16	
6000	← 345°	3400	→ 165°	1900	← 165°	1900	← 165°	800	← 165°
GP 3.00°		TCH 40		7.3 NM		3.5 NM		0.7 NM	
CATEGORY	A	B	C	D					
LPV DA		329-1	250 (300-1)						
LNAV/VNAV DA		329-1	250 (300-1)						
LNAV MDA		400-1	321 (400-1)						
CIRCLING	460-1 381 (400-1)	540-1 461 (500-1)	540-1½ 461 (500-1½)	800-2¼ 721 (800-2¼)					



AK, 26 DEC 2024 to 20 FEB 2025

AK, 26 DEC 2024 to 20 FEB 2025