

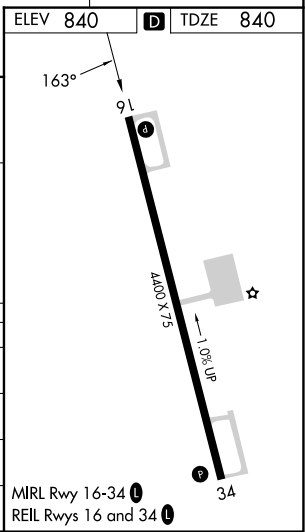
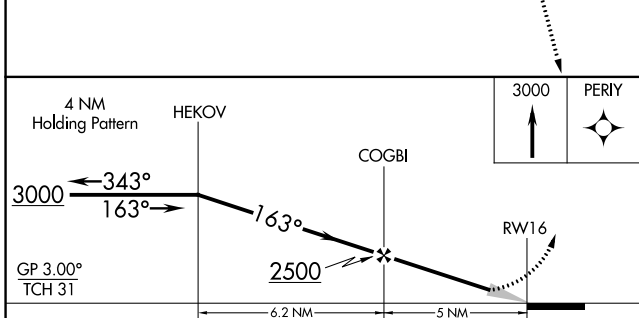
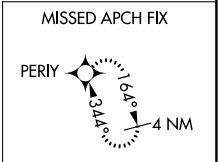
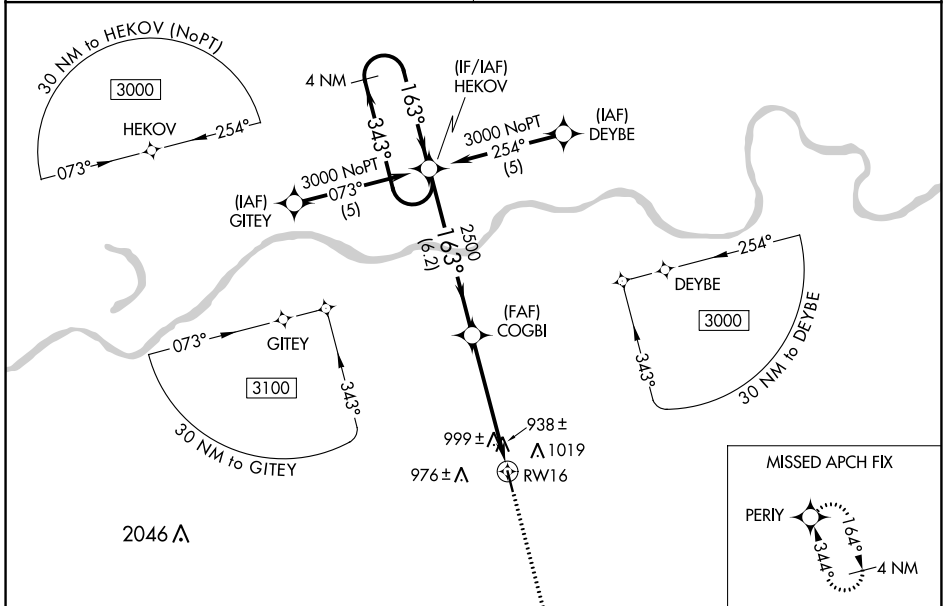
WAAS CH <b>86601</b> W16A	APP CRS <b>163°</b>	Rwy Idg TDZE Apt Elev	<b>4400</b> <b>840</b> <b>840</b>
---------------------------------	------------------------	-----------------------------	---

# RNAV (GPS) RWY 16

HIGGINSVILLE INDUSTRIAL MUNI (HIG)

RNP APCH - GPS	<p>Baro-VNAV NA. Use Whiteman Air Force Base altimeter setting; when not received, use Lee's Summit Muni altimeter setting; increase LPV DA to 1293 feet and all visibilities ¼ SM; increase LNAV/VNAV DA to 1410 feet; increase all MDAs 60 feet, LNAV visibility Cat C ¼ SM and Circling visibility Cats C and D ¼ SM.</p>	MISSED APPROACH: Climb to 3000 direct PERLY and hold.
----------------	--	---

WHITEMAN APP CON ★ <b>127.45 284.0</b>	UNICOM <b>122.8 (CTAF) 0</b>
---	---------------------------------



CATEGORY	A	B	C	D
LPV DA	1247-1½ 407 (500-1½)			
LNAV/VNAV DA	1364-2 524 (600-2)			
LNAV MDA	1360-1 520 (600-1)	1360-1½ 520 (600-1½)	1360-1¾ 520 (600-1¾)	
CIRCLING	1440-1 600 (600-1)	1440-1½ 600 (600-1½)	1460-2 620 (700-2)	

NC-3, 26 DEC 2024 to 23 JAN 2025

NC-3, 26 DEC 2024 to 23 JAN 2025