

APP CRS	Rwy Idg	3903
357°	TDZE	413
	Apt Elev	413

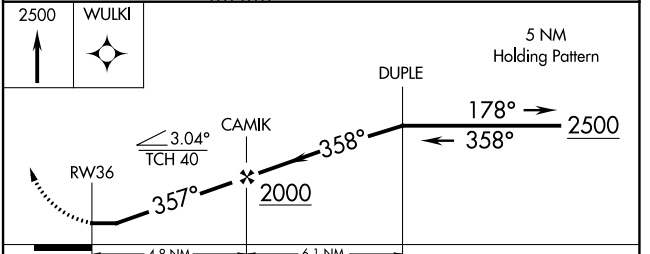
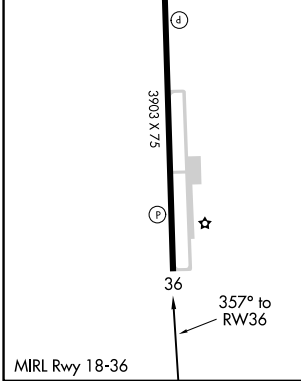
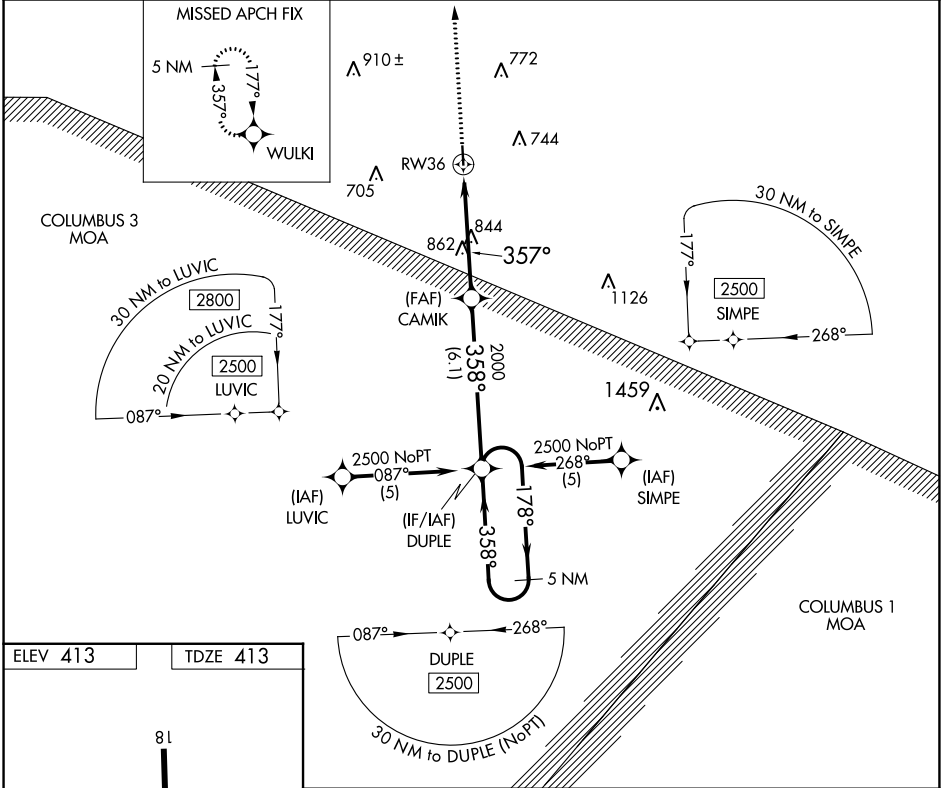
RNAV (GPS) RWY 36

NEW ALBANY/UNION COUNTY (M72)

▼ Use Tupelo altimeter setting, if not received, use Oxford altimeter setting and increase all MDAs 20 feet. Procedure NA at night. DME/DME RNP-0.3 NA. Visibility reduction by helicopters NA.

▲ NA MISSED APPROACH: Climb to 2500 direct WULKI and hold.

TUP ASOS 133.525	MEMPHIS CENTER 135.9 273.55	UNICOM 122.8 (CTAF)
----------------------------	---------------------------------------	-------------------------------



CATEGORY	A	B	C	D
LNAV MDA	1220-1 807 (900-1)	1220-1¼ 807 (900-1¼)	1220-2¼ 807 (900-2¼)	NA
CIRCLING	1220-1 807 (900-1)	1220-1¼ 807 (900-1¼)	1220-2¼ 807 (900-2¼)	NA

SC-4, 26 DEC 2024 to 23 JAN 2025

SC-4, 26 DEC 2024 to 23 JAN 2025