

WAAS CH <b>82341</b> <b>W31A</b>	APP CRS <b>313°</b>	Rwy Idg TDZE Apt Elev	<b>3800</b> <b>1885</b> <b>1885</b>
--	------------------------	-----------------------------	---

# RNAV (GPS) RWY 31

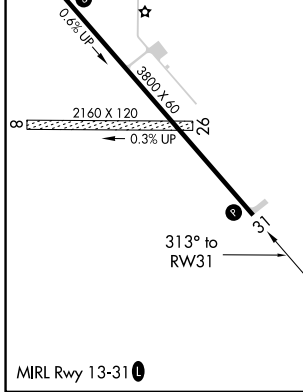
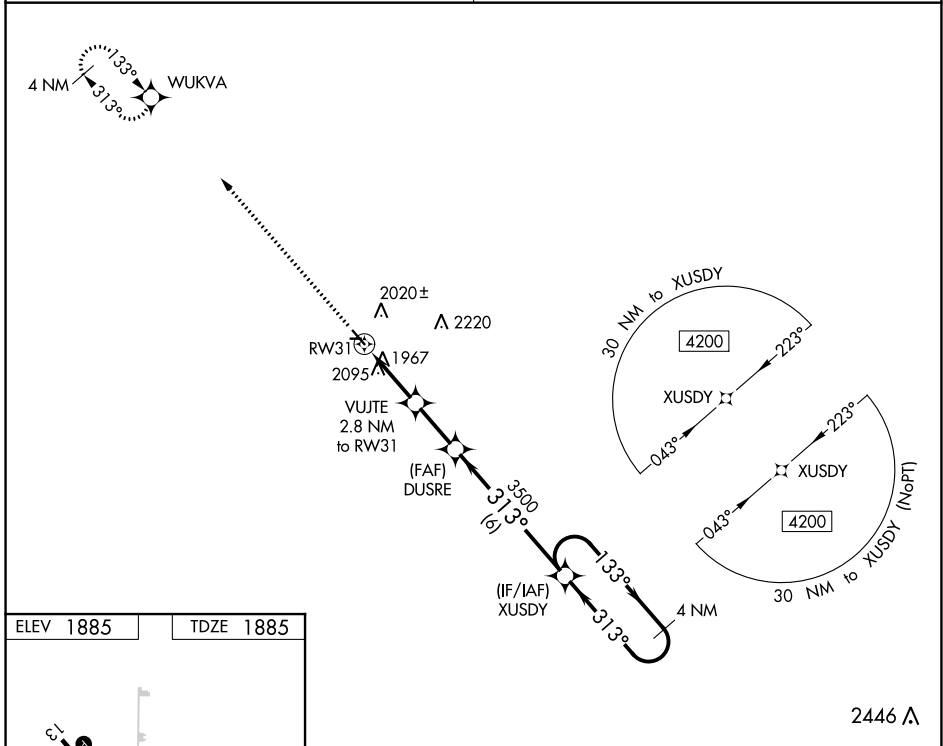
ONIDA MUNI (98D)

**▽** DME/DME RNP-0.3 NA. VDP NA when using Pierre altimeter setting. When local altimeter setting not received, use Pierre altimeter setting: increase all MDAs 80 feet and LP Cat C visibility 1/8 SM and LNAV and Circling Cat C visibility 1/4 SM.

**▲** NA

MISSED APPROACH: Climb to 4100 direct WUKVA and hold.

AWOS-2 <b>122.9 (CTAF) 0</b>	MINNEAPOLIS CENTER <b>125.1 269.1</b>
---------------------------------	--



4100	WUKVA	VUJTE 2.8 NM to RW31	DUSRE	XUSDY	4200	4 NM Holding Pattern
		1 NM to RW31	3.00° TCH 31	3500	133°	← 313°
		2800				
		1 NM	1.8	2.2 NM	6 NM	
CATEGORY	A	B	C	D		
LP MDA	2220-1 335 (400-1)				NA	
LNAV MDA	2360-1	475 (500-1)	2360-1 3/8 475 (500-1 3/8)		NA	
<b>C</b> CIRCLING	2400-1	515 (600-1)	2520-1 3/4 635 (700-1 3/4)		NA	

NC-1, 26 DEC 2024 to 23 JAN 2025

NC-1, 26 DEC 2024 to 23 JAN 2025