

(KTS3.MUJUD) 23278

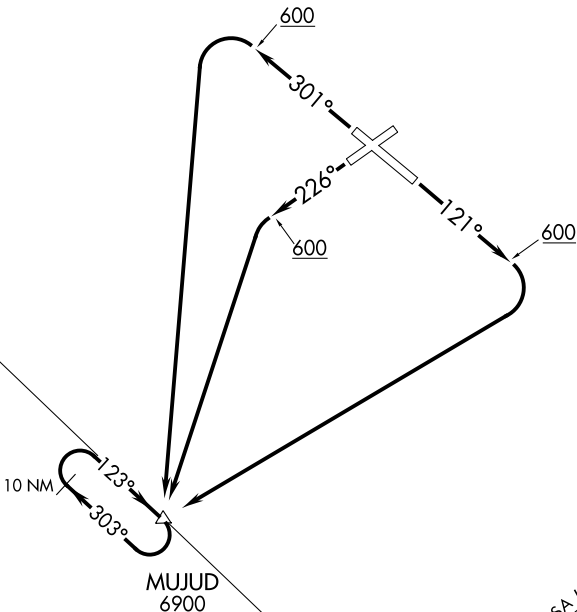
AL-10274 (FAA)

BREVIG MISSION (KTS) (PFKT)
BREVIG MISSION, ALASKA

BREVIG THREE DEPARTURE (OBSTACLE) (RNAV)

AWOS-3P
121.55
ANCHORAGE CENTER
133.3 290.4
CTAF
123.0

RNAV1 - GPS



TAKEOFF MINIMUMS

- Rwy 5: NA-Terrain.
- Rwys 12, 23: Standard.
- Rwy 30: 400-2¾ or standard with minimum climb of 237' per NM to 500.

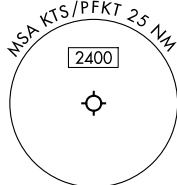
TAKEOFF OBSTACLE NOTES

- Rwy 12: Vegetation 154' from DER, 373' right of centerline, 40' MSL.
Power Line 803' from DER, 632' right of centerline, 34' AGL/62' MSL.
- Rwy 23: Vehicle on road 136' from DER, 440' left of centerline, 14' AGL/53' MSL.
Pole 262' from DER, 543' right of centerline, 45' AGL/60' MSL.

NOTE: Chart not to scale.

DEPARTURE ROUTE DESCRIPTION

- TAKEOFF RUNWAY 12:** Climb on heading 121° to 600 then climbing right turn direct MUJUD, thence. . . .
- TAKEOFF RUNWAY 23:** Climb on heading 226° to 600 then climbing left turn direct MUJUD, thence. . . .
- TAKEOFF RUNWAY 30:** Climb on heading 301° to 600 then climbing left turn direct MUJUD, thence. . . .
. . . .continue climb in hold at MUJUD to at or above 6900. Maintain ATC assigned altitude before proceeding on course.



BREVIG THREE DEPARTURE (OBSTACLE) (RNAV)
(KTS3.MUJUD) 05OCT23

BREVIG MISSION, ALASKA
BREVIG MISSION (KTS) (PFKT)

AK, 26 DEC 2024 to 20 FEB 2025

AK, 26 DEC 2024 to 20 FEB 2025