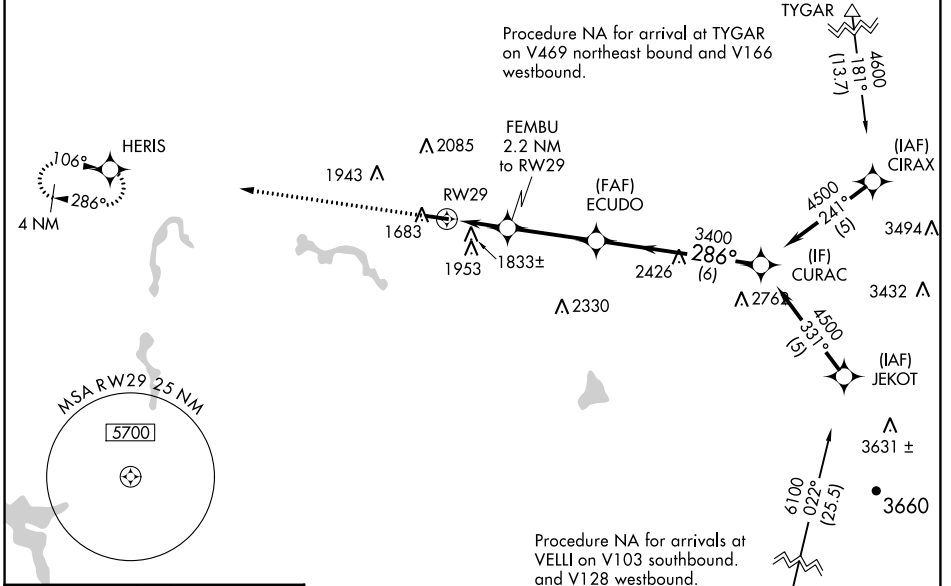


WAAS CH 56624 W29A	APP CRS 286°	Rwy ldg TDZE Apt Elev	4201 1635 1635
--	------------------------	-----------------------------	---

RNAV (GPS) RWY 29

UPSHUR COUNTY RGNL (W22)

RNP APCH.		MISSED APPROACH: Climb to 4000 direct HERIS and hold.
For uncompensated Baro-VNAV systems, LNAV/VNAV NA below -18°C or above 54°C. Rwy 29 helicopter visibility reduction below 3/4 SM NA.		
AWOS-3 119.975	CLARKSBURG APP CON ★ 121.15 284.65	UNICOM 122.8 (CTAF) 0



ELEV 1635	TDZE 1635
-----------	-----------

MIRL Rwy 11-29 0 4201 X 75 29 286°	4000 ↑ HERIS	VGSi and RNAV glidepath not coincident (VGSi Angle 3.00/TCH 27).	CURAC	
	*LNAV only.	FEMBU 2.2 NM to RW29	ECUDO 3400	
		*1.4 NM to RW29		4500
			*2360	GP 3.00° TCH 40
	1.4 NM	0.8 NM	3.2 NM	6 NM
CATEGORY	A	B	C	D
LPV DA		1885-1	250 (300-1)	NA
LNAV/VNAV DA		2125-1¾	490 (500-1¾)	NA
LNAV MDA	2100-1	465 (500-1)	2100-1¾ 465 (500-1¾)	NA
CIRCLING	2240-1 605 (700-1)	2260-1 625 (700-1)	2400-2¼ 765 (800-2¼)	NA

NE-4, 26 DEC 2024 to 23 JAN 2025

NE-4, 26 DEC 2024 to 23 JAN 2025