

WAAS CH <b>58031</b> <b>W22A</b>	APP CRS <b>218°</b>	Rwy Idg TDZE Apt Elev	<b>4000</b> <b>1036</b> <b>1036</b>
--	------------------------	-----------------------------	---

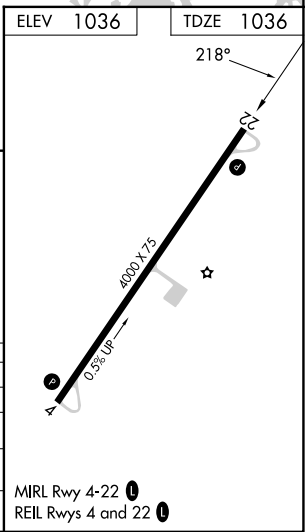
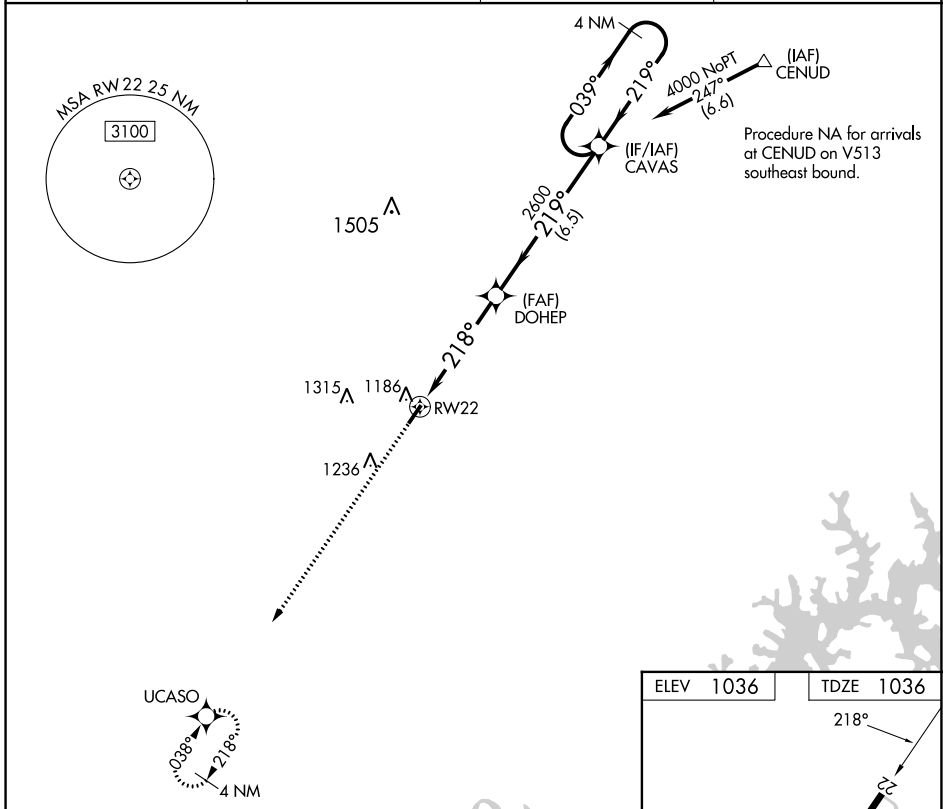
# RNAV (GPS) RWY 22

TOMPKINSVILLE/MONROE COUNTY (T'ZV)

**▼** Baro-VNAV NA. DME/DME RNP-0.3 NA. Helicopter visibility reduction below ¼ SM NA. Use Glasgow altimeter setting. Night landing: Rwy 4 NA. **▲** NA

MISSED APPROACH: Climb to 4000 direct UCASO and hold.

AWOS-AV <b>124.175</b>	GLW AWOS-3 <b>118.525</b>	MEMPHIS CENTER <b>132.9 290.3</b>	UNICOM <b>123.05 (CTAF) 0</b>
---------------------------	------------------------------	--------------------------------------	----------------------------------



4000	UCASO	*LNAV only.		CAVAS	4 NM Holding Pattern
↑	✧				
		DOHEP 2600	2600	4000	GP 3.00° TCH 30
		1.7	3.1 NM	6.5 NM	
CATEGORY	A	B	C	D	
LPV DA	1385-1¼	349 (400-1¼)		NA	
LNAV/VNAV DA	1593-2	557 (600-2)		NA	
LNAV MDA	1620-1	584 (600-1)	1620-1¾ 584 (600-1¾)	NA	
<b>C</b> CIRCLING	1640-1 604 (700-1)	1800-1 764 (800-1)	1840-2¼ 804 (900-2¼)	NA	

MIRL Rwy 4-22 0  
REIL Rws 4 and 22 0

SE-1, 26 DEC 2024 to 23 JAN 2025

SE-1, 26 DEC 2024 to 23 JAN 2025