

WAAS CH <b>61229</b> <b>W25A</b>	APP CRS <b>247°</b>	Rwy Idg TDZE Apt Elev	<b>5099</b> <b>3453</b> <b>3490</b>
--	------------------------	-----------------------------	---

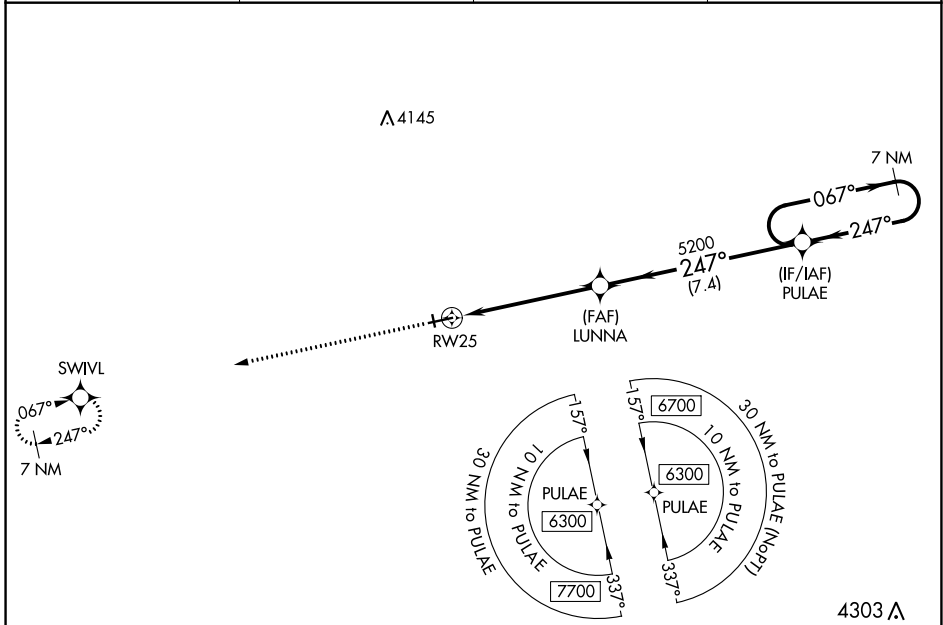
# RNAV (GPS) RWY 25

ROUNDUP (R.P.X)

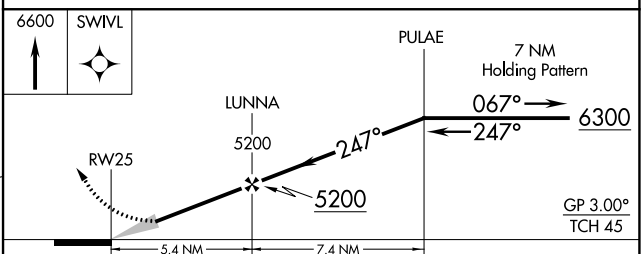
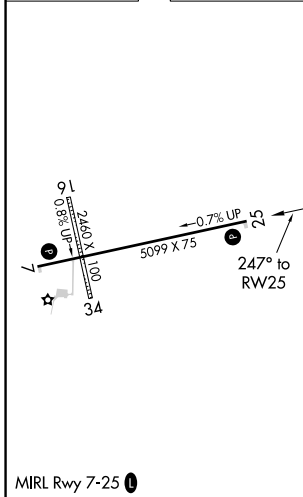
**NA** When VGSI inop, Circling to Rwy 7 NA at night. Baro-VNAV NA. Use Billings altimeter setting; when not received, procedure NA. DME/DME RNP-0.3 NA.

MISSED APPROACH: Climb to 6600 direct SWIVL and hold

BIL ASOS <b>126.3</b>	SALT LAKE CENTER <b>126.85 305.2</b>	UNICOM <b>122.8</b> (CTAF)	<b>122.7</b>
--------------------------	---	-------------------------------	--------------



ELEV 3490	TDZE 3453
-----------	-----------



CATEGORY	A	B	C	D
LPV DA	3768-1		315 (300-1)	
LNAV/VNAV DA	3818-1¼		365 (400-1¼)	
LNAV MDA	3900-1	447 (500-1)	3900-1⅔	447 (500-1⅔)
CIRCLING	4000-1	510 (600-1)	4140-1¾ 650 (700-1¾)	4340-2¾ 850 (900-2¾)

NW-1, 26 DEC 2024 to 23 JAN 2025

NW-1, 26 DEC 2024 to 23 JAN 2025