

WAAS CH 56529 W07A	APP CRS 067°	Rwy Idg TDZE 3490 Apt Elev 3490	5099
--	------------------------	---	-------------

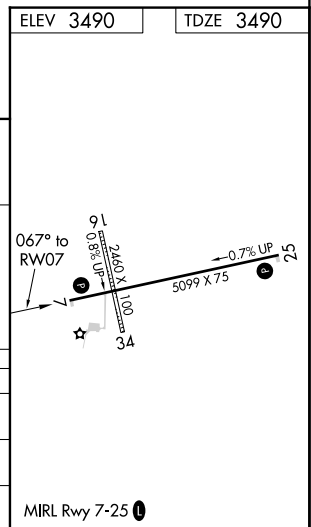
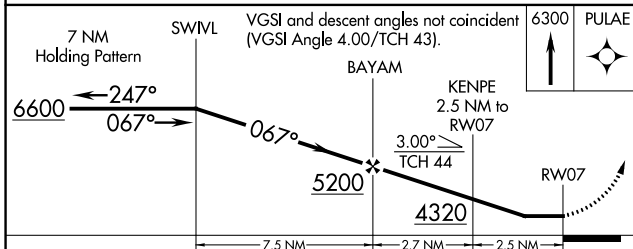
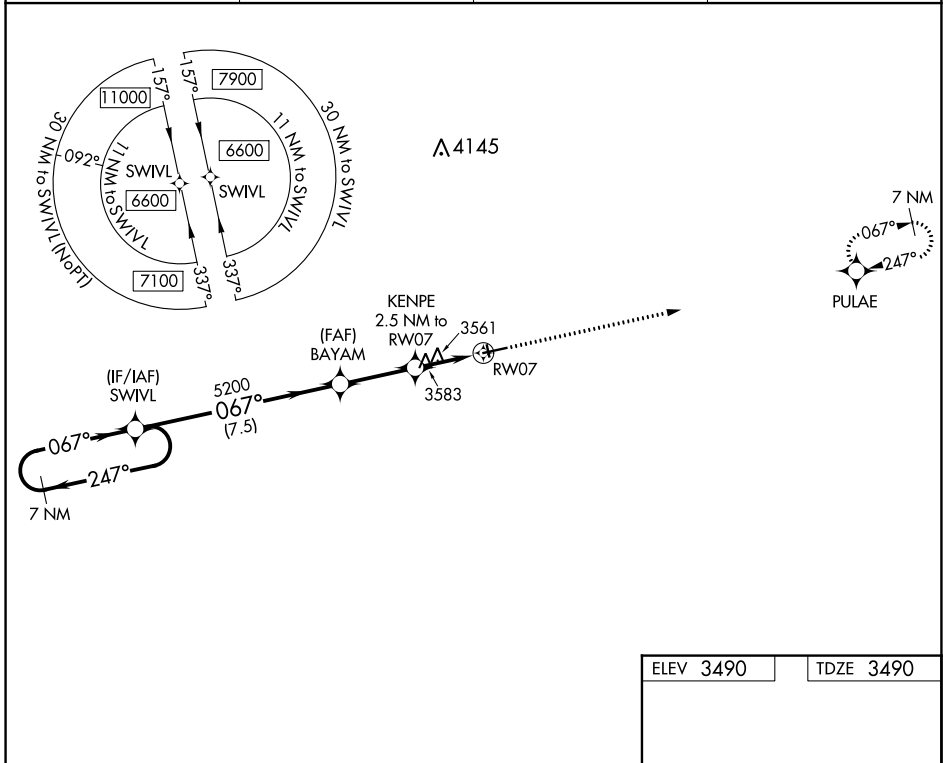
RNAV (GPS) RWY 7

ROUNDUP (RPX)

NA Use Billings altimeter setting, when not received, procedure NA.
When VGSI inop, Straight-in/Circling Rwy 7 procedure NA at night.
DME/DME RNP-0.3 NA. Visibility reduction by helicopters NA.

MISSED APPROACH: Climb to 6300 direct PULAE and hold.

BIL ASOS 126.3	SALT LAKE CENTER 126.85 305.2	UNICOM 122.8 (CTAF)	122.7
--------------------------	---	-------------------------------	--------------



CATEGORY	A	B	C	D
LP MDA	3940-1 450 (500-1)	3940-1 $\frac{3}{8}$ 450 (500-1 $\frac{3}{8}$)	3940-1 $\frac{3}{8}$ 450 (500-1 $\frac{3}{8}$)	450 (500-1 $\frac{3}{8}$)
LNAV MDA	3960-1 470 (500-1)	3960-1 $\frac{3}{8}$ 470 (500-1 $\frac{3}{8}$)	3960-1 $\frac{3}{8}$ 470 (500-1 $\frac{3}{8}$)	470 (500-1 $\frac{3}{8}$)
CIRCLING	4000-1 510 (600-1)	4140-1 $\frac{3}{4}$ 650 (700-1 $\frac{3}{4}$)	4340-2 $\frac{3}{4}$ 850 (900-2 $\frac{3}{4}$)	850 (900-2 $\frac{3}{4}$)

NW-1, 26 DEC 2024 to 23 JAN 2025

NW-1, 26 DEC 2024 to 23 JAN 2025