

APP CRS 196°	Rwy Idg TDZE Apt Elev	3815 1276 1276
------------------------	-----------------------------	---

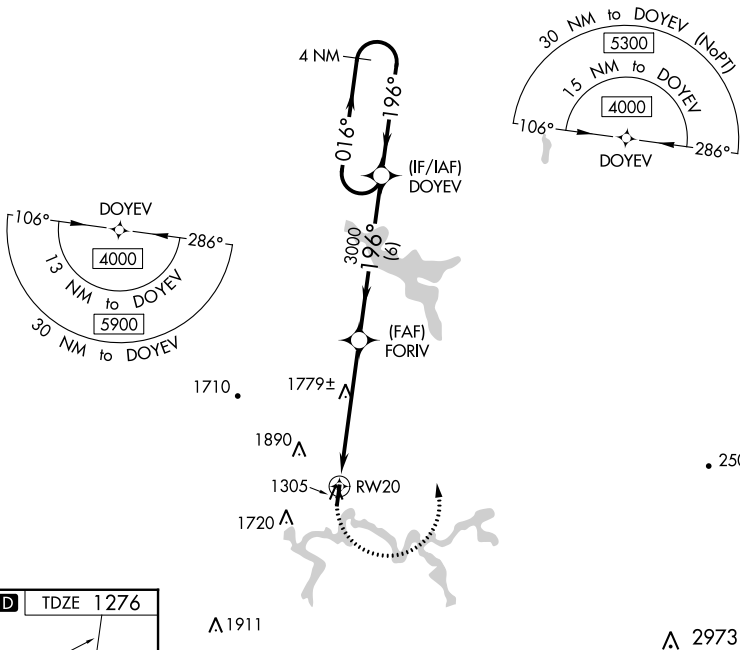
RNAV (GPS) RWY 20

BRAXTON COUNTY (48I)

▼ DME/DME RNP-0.3 NA. Procedure NA at night. Helicopter visibility reduction below 1 SM NA.
▲ NA When local altimeter setting not received, use Clarksburg altimeter setting and increase all MDA 260 feet. Increase LNAV Cat A/B visibility ¼ mile, LNAV Cat C visibility ½ mile, and Circling Cat A visibility ¼ mile.

MISSED APPROACH: Climbing left turn to 4000 direct DOYEV and hold.

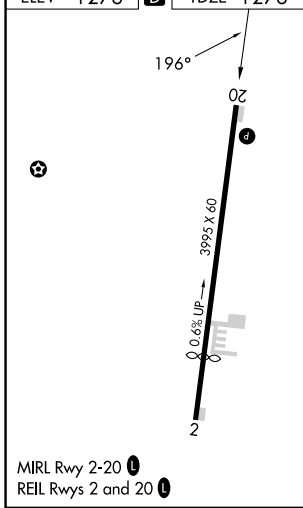
AWOS-3P 118.225	CLARKSBURG APP CON ★ 121.15 284.65	CTAF 122.9 0
---------------------------	--	------------------------



NE-4, 26 DEC 2024 to 23 JAN 2025

NE-4, 26 DEC 2024 to 23 JAN 2025

ELEV 1276	D	TDZE 1276
-----------	----------	-----------



SUTTON, WEST VIRGINIA
Amdt 1 08JAN15

38°41'N-80°39'W

BRAXTON COUNTY (48I)

RNAV (GPS) RWY 20

4000 DOYEV	VGSi and descent angles not coincident (VGSi Angle 4.00/TCH 40).		DOYEV	4 NM Holding Pattern
RW20	FORIV	3000	196°	016° → 4000
5.3 NM		6 NM		
CATEGORY	A	B	C	D
LNAV MDA	2060-1 784 (800-1)	2060-1 ¼ 784 (800-1 ¼)	2060-2 ½ 784 (800-2 ½)	NA
C CIRCLING	2060-1 784 (800-1)	2240-1 ½ 964 (1000-1 ½)	2240-3 964 (1000-3)	NA