

WAAS CH <b>93840</b> <b>W17A</b>	APP CRS <b>173°</b>	Rwy Idg TDZE Apt Elev	<b>6000</b> <b>4789</b> <b>4789</b>
--	------------------------	-----------------------------	---

# RNAV (GPS) RWY 17

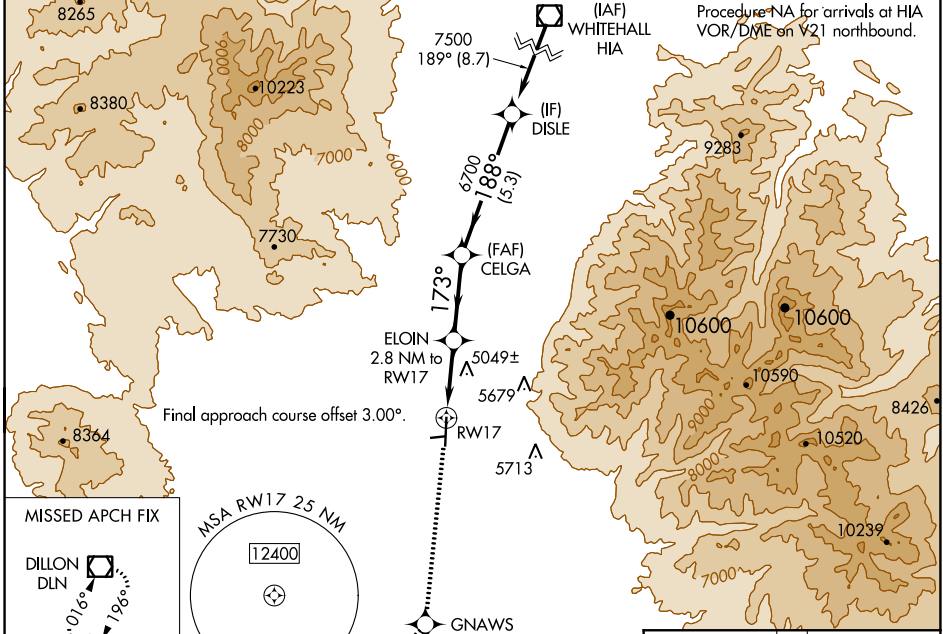
RUBY VALLEY FLD (RVF)

RNP APCH - GPS.

⚠ Circling NA to Rwy 7 and 25. Circling NA east of Rwy 17-35.  
 ⚠ Rwy 17 helicopter visibility reduction below 3/4 SM NA. Baro-VNAV NA.

MISSED APPROACH: Climb to 11100 direct GNAWS and on track 211° to DLN VOR/DME and hold, continue climb-in-hold to 11100.

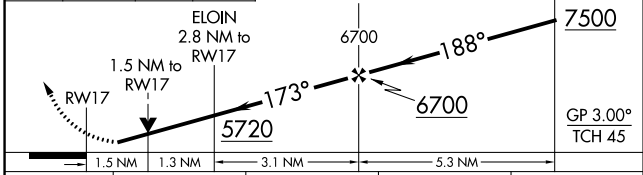
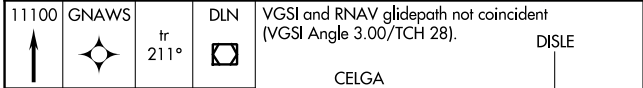
AWOS-3PT <b>119.025</b>	SALT LAKE CENTER <b>132.4 338.3</b>	CTAF <b>122.90</b>
----------------------------	--	-----------------------



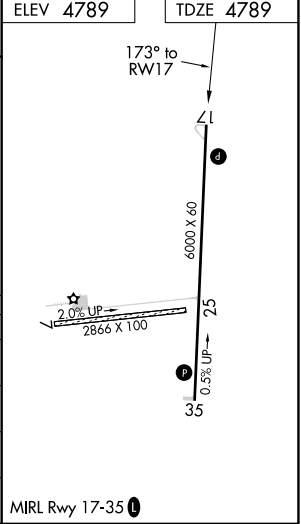
MISSED APCH FIX

DILLON DLN  
12400

MSA RWY 17 25 NM  
12400



CATEGORY	A	B	C	D
LPV DA	5064-1		275 (300-1)	
LNAV/VNAV DA	5443-1 7/8		654 (700-1 7/8)	
LNAV MDA	5300-1	511 (600-1)	5300-1 3/8	511 (600-1 3/8)
CIRCLING	5300-1	511 (600-1)	5300-1 1/2 511 (600-1 1/2)	5460-2 1/4 671 (700-2 1/4)



NW-1, 26 DEC 2024 to 23 JAN 2025

NW-1, 26 DEC 2024 to 23 JAN 2025